

AIB

Airfield Identification Beacon

Compliant to Latest International Standards

- ▶ ICAO Aerodromes -Annex 14 Volume 1, Par. 5.3.3
“Aeronautical Beacon”
- ▶ CE marking



Applications

Airfield Identification Beacon used to assists the pilot to easily identify the airport from the air by use of flashing Airport IATA/ICAO Morse code.

Features

According to Annex 14 of ICAO regulations, Aeronautical Beacons should be provided at airports intended for use at night.

An Identification Beacon shall be provided where the airport, due to the location or high background luminance, cannot be easily identified from the air by other identification means.

The light displays a white, green or yellow flashing light in the International Morse Code that identifies the airport, and ICAO or IATA Airport Letters can be used.

Electrical Performance

- Power supply by external controller box
- Suitable for 24Vdc or 115/230Vac power supply
- LED supplied with constant current
- No RF - Radiations

Optical Features

- Based on LED technology
- White / GREEN / yellow light 2.000cd, night mode
- Airport IATA/ICAO Morse Code Flash
- Horizontal beam radiation 360°
- Vertical beam spread -3° +1°
- PMMA lens
- Light output alignment device

Mechanical Features - Light

- Anodised aluminium body, painted yellow
- Borosilicate glass cover protection
- Silicon rubber, VMQ
- Base wind collector and internal heat sink for optimum cooling
- Degree of protection: IP66
- Anti-condensation Gore-Tex valve
- Operating temp.: -30°C to +50°C
- Lamp unit weight: 6kg

Mechanical Features - Control box

- Enclosure material: mild steel, painted RAL 7035
- Surge arrester
- Fault alarm
- Photocell (twilight sensor)
- Overvoltage protection

Environmental Conditions

- ▶ Ambient Temperature -30°C to +50°C
- ▶ Storage Temperature -35°C to +65°C

- ▶ Atmospheric Altitude up to 10,000 feet (3000m)
- ▶ Relative Humidity 0-100% (sealed unit)

Ordering Codes: (LS) AIB

Airfield Identification Beacon

Standard
1 = ICAO
2 = IATA

Supply Voltage
1 = 220VAC
2 = 24VDC

Colour
W = White Flashing
G = Green Flashing
R = Red Flashing
B = White / Green Flashing

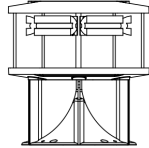
Code
ICAO / IATA code (XXX)/(XXXX)

Other options available
Beacon support bracket
GPS (Global Position System) syncro
TWIN version: two separate LED circuits
in the same fixture (normal + stand-by)

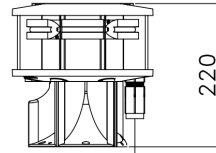


Dimensions - Light unit

BEACON FRONT VIEW

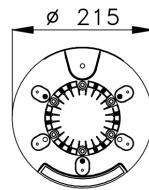


BEACON SIDE VIEW

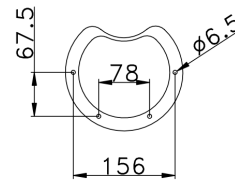


INCOMING POWER SUPPLY CABLE
C/W CONNECTOR (CABLE O.D. 7/14mm, Max size 2.5sqmm)

BEACON TOP VIEW

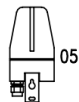


FIXING DETAILS



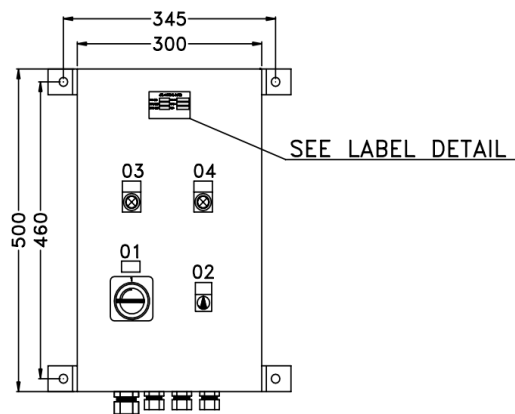
Dimensions - Control box

TWILIGHT
SENSOR



TO BE INSTALLED OUTSIDE
LOOKING FREE SKY NORTH
SUPPLIED AS LOOSE ITEM

FRONT VIEW



SIDE VIEW

