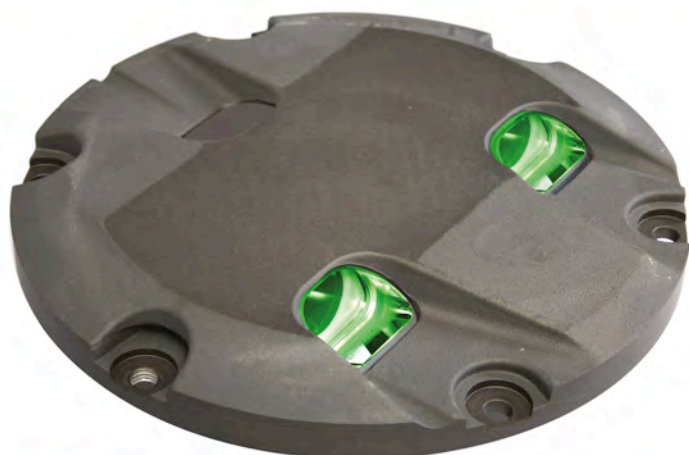


Tungsten halogen technology



ZA485

Threshold

High intensity unidirectional inset fitting

Features

- ▶ Lightweight and robust due to its aluminium alloy construction
- ▶ Components that are common with ZA181 and ZA280 series
- ▶ Long life halogen lamps with a typical life of 1500 hours at full intensity or over 3500 hours in normal usage
- ▶ Standard adaptor rings to suit 15", 15.5" bases
- ▶ Prism removal and replacement achieved without the need for adhesive or sealants
- ▶ Colour beam variations achieved by dichroic coating
- ▶ Lamp bypass options available when required
- ▶ Pre-focused optics to simplify maintenance procedures
- ▶ Light channel within 5mm of grade
- ▶ Plug for pressure testing
- ▶ Low temperature - temperature at centre of top cover remains below 160°C ICAO and FAA limit
- ▶ All fasteners are stainless steel
- ▶ IMM available on request

Compliance with standards

ICAO	Annex 14
FAA	AC150/5345-46D, L-850A,B,C, D, E Class I & IIB
NATO	STANAG 3316
CAA	CAP168

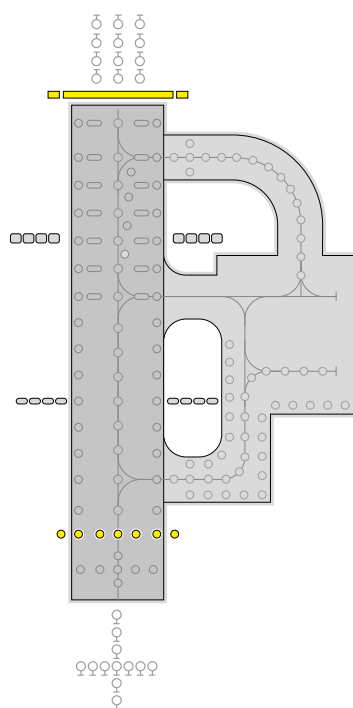
Application

Suitable for use in category I, II and III all weather operation airfield lighting systems as:

- ▶ Threshold

Options

- ▶ ZM480 seating pot (wet)
- ▶ ZM480 seating pot (dry)
- ▶ PSA & FAA adaptors
- ▶ ZS023 sighting device
- ▶ ZM500/4 lifting handle
- ▶ ZM480 installation jig



Electrical supply

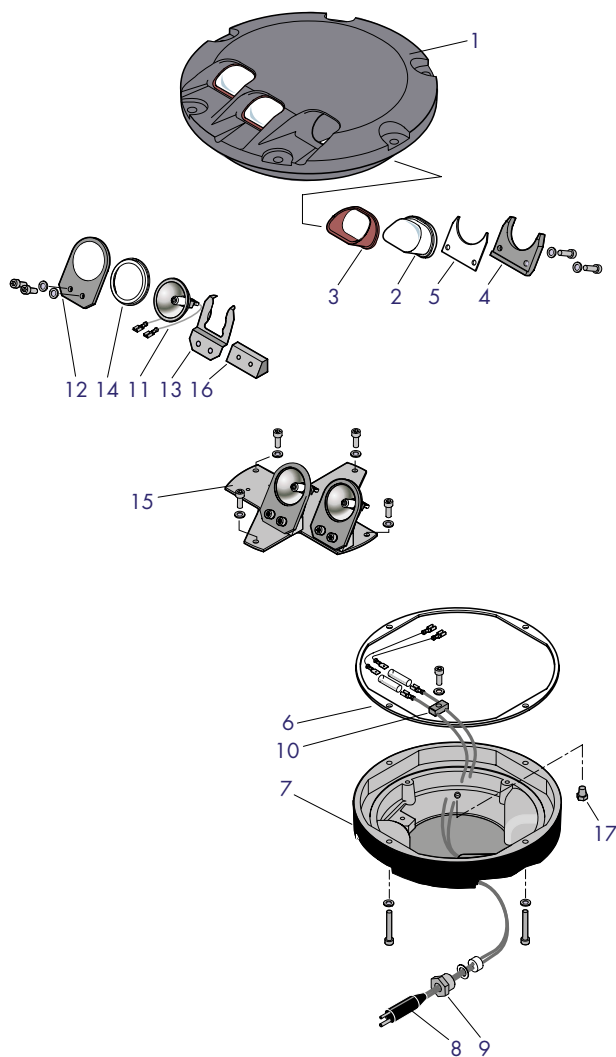
Suitable for use in 6.6A airfield lighting circuits normally supplied from 100W, 200W or 300W isolating transformers.

Packaging data

Net weight	9.3kg
Gross weight	10kg
Carton size	50mm(w) x 330mm(d) x 330mm(h)

Components

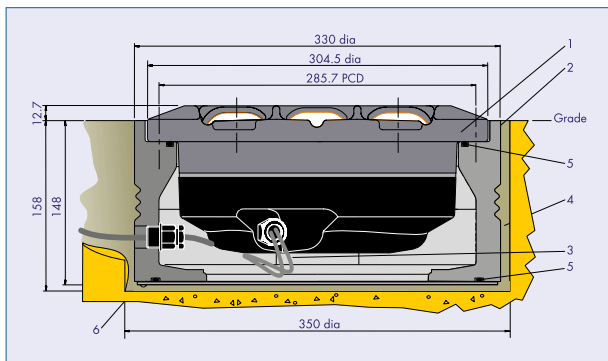
- 1 Body casting uni-directional
- 2 Prism
- 3 Prism gasket
- 4 Prism clamp
- 5 Prism clamp gasket
- 6 Bottom cover gasket
- 7 Bottom cover casting
- 8 'B' type plug lead
- 9 Cable gland assembly
- 10 Cable clamp
- 11 Reflector lamp
- 12 Lampholder
- 13 Lamp retaining spring
- 14 Lamp gasket
- 15 Mounting plates
- 16 Lampholder support block
- 17 Pressure test plug



Typical installation methods

- In a 12" dia seating pot, atg airports ltd type ZM480

ZA485 Installed in ZM480 Seating Pot (dry version)

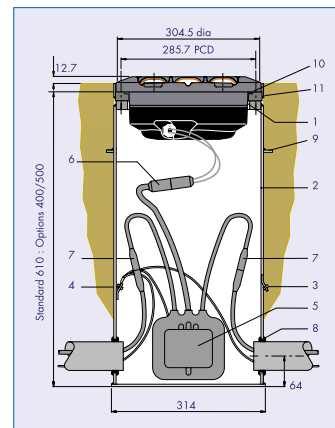


1. ZA485 Fitting
2. ZM480 Seating Pot
3. Secondary Connection
4. Grout
5. 'O' Ring
6. Cable Gland

Note ZM480 Wet seating pot arrangement information available on request.

- In a 12" FAA L-868 Base

ZA485 Installed on FAA L-868 Base



1. ZA485 Fitting
2. FAA L-868 Base (one piece)
3. Outer earth terminal (optional)
4. Inner earth terminal (optional)
5. Isolating transformer
6. Secondary connection
7. Primary connection
8. Grommet
9. Anchor ring
10. 'O' Ring
11. Dam ring

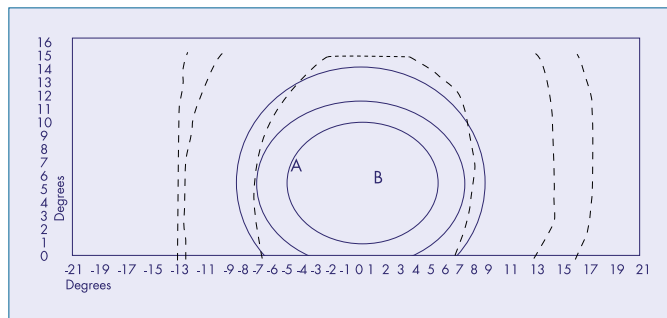
Photometric performance

Threshold Inset Fitting:

Green	ZA485
Main Ellipse Intensity Measurements (Candelas)	
Average	11546
Min. Average	10000
Max (B)	14433
Min (A)	8405

Nominal Lamp Details

Power	2 x 105 Watts
Current	6.6 Amps
Type	Cold Reflector Lamp
ICAO	CAP168
Annex 14	FIG 6A/3
FIG 2.3	



atg airports ltd
 Lowton Business Park | Newton Road
 Lowton St. Mary's | Warrington
 WA3 2AP | United Kingdom

atg airports inc
 7857 Drew Circle #11
 Fort Myers | Florida 33967
 USA



UK: +44 (0) 1942 68 5555 | USA: 001 (239) 985-9406

www.atgairports.com | products@atgairports.com | sales-usa@atgairports.com

ZA485