

Tungsten halogen technology



ZA483

Runway edge

High intensity bidirectional inset fitting

Features

- ▶ Lightweight and robust due to its aluminium alloy construction
- ▶ Components that are common with ZA181 and ZA280 series
- ▶ Long life halogen lamps with a life of 1500 hours at full intensity or over 3500 hours in normal usage
- ▶ Standard adaptor rings to suit 15", 15.5" bases
- ▶ Prism removal and replacement achieved without the need for adhesive or sealants
- ▶ Colour beam variations achieved by dichroic coating
- ▶ Lamp bypass options available when required
- ▶ Pre-focused optics to simplify maintenance procedures
- ▶ Light channel within 5mm of grade
- ▶ Plug for pressure testing
- ▶ Low temperature - temperature at centre of top cover remains below 160°C ICAO and FAA limit
- ▶ All fasteners are stainless steel
- ▶ IMM available on request

Compliance with standards

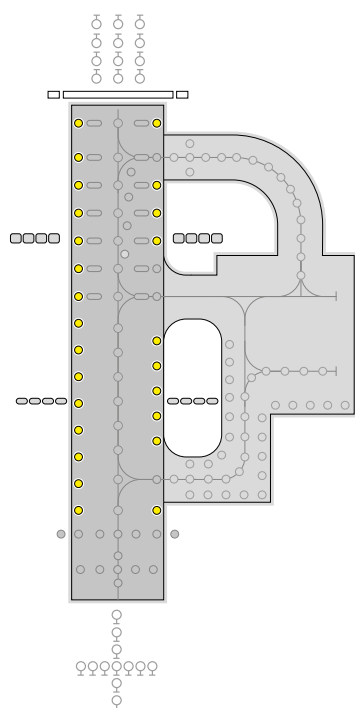
- ICAO Annex 14
- FAA L-850C Class I & IIB, AC150/5345-46D
- NATO STANAG 3316
- CAA CAP168 Figs 6A/9, 6A/10

Application

High intensity, inset runway edge fitting suitable for use in category I, II and III all weather operation airfield lighting systems.

Options

- ▶ ZM480 seating pot (wet)
- ▶ ZM480 seating pot (dry)
- ▶ PSA & FAA adaptors
- ▶ ZS023 sighting device
- ▶ ZM500/4 lifting handle
- ▶ ZM480 installation jig



electrical supply

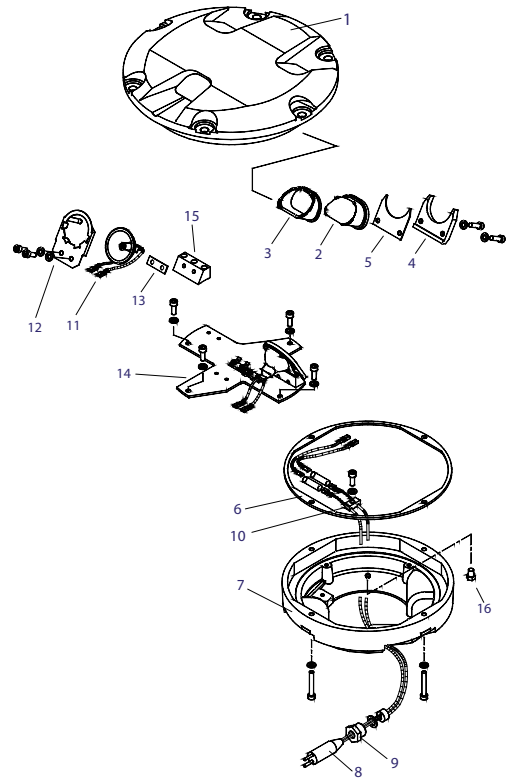
Suitable for use in 6.6A airfield lighting circuits normally supplied from 100W, 200W or 300W isolating transformers.

packaging data

Net weight	9.3kg
Gross weight	10kg
Carton size	50mm(w) x 330mm(d) x 330mm(h)

Components

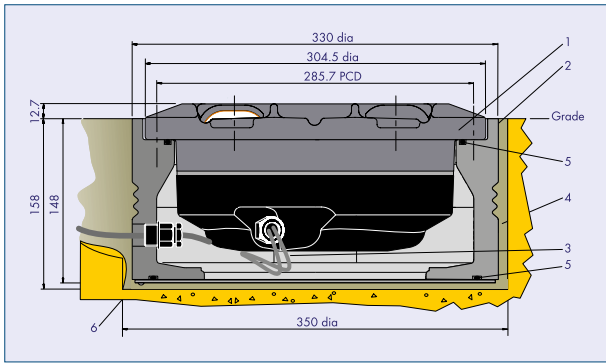
1	Body casting uni-directional or bi-directional	Not Saleable
2	Clear prism or red prism or blank for prism aperture	Not Saleable
3	Prism gasket	SLC16069
4	Prism clamp	SLC19141
5	Prism clamp gasket	SLC40092
6	Bottom cover gasket	SLC33075
7	Bottom cover casting (single lead) or bottom cover casting (twin lead) or bottom cover casting (three lead)	SLC32037
8	'B' type plug lead	SLC33069
9	Cable gland assembly	SLC33076
10	Cable clamp	Not Saleable
11	Reflector lamp 105W	Not Saleable
12	Spring Finger Lampholder	SLC40114
13	PTFE Damper	SLC13026
14	Mounting plates: Runway edge Threshold (LHT), runway end Threshold (RHT), runway end	SLC21282/3/4
15	Lampholder support block	SLC21281
16	Pressure test plug	SLC08075
		SLC32040
		SLC32039
		SLC21280
		SLC21287
		SLC21286
		SLC21285
		SLC21256



Typical installation methods

- In a 12" dia seating pot, atg airports ltd type ZM480

ZA483 Installed in ZM480 Seating Pot (dry version)

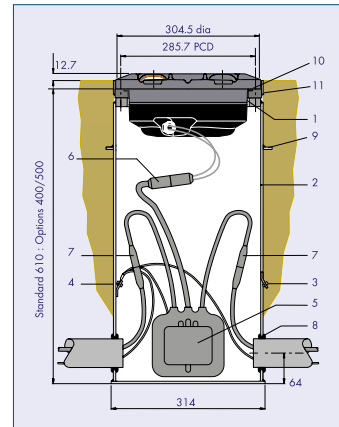


- | | |
|-------------------------|----------------|
| 1. ZA483 Fitting | 4. Grout |
| 2. ZM480 Seating Pot | 5. 'O' Ring |
| 3. Secondary Connection | 6. Cable Gland |

Note ZM480 Wet seating pot arrangement information available on request.

- In a 12" FAA L-868 Base

ZA483 Installed on FAA L-868 Base

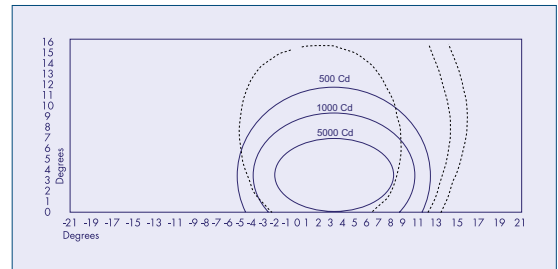


- | | |
|------------------------------------|-----------------------|
| 1. ZA483 Fitting | 7. Primary connection |
| 2. FAA L-868 Base (one piece) | 8. Grommet |
| 3. Outer earth terminal (optional) | 9. Anchor ring |
| 4. Inner earth terminal (optional) | 10. 'O' Ring |
| 5. Isolating transformer | 11. Dam ring |
| 6. Secondary connection | |

Photometric performance

Runway Edge Inset Fitting:

Red	ZA483	Nominal Lamp Details	
Main Ellipse Intensity Measurements (Candelas)		Power	2 x 105 Watts
Average	6028	Current	6.6 Amps
Min. Average	5000	Type	Relreflector
Max (B)	7275	CAP168	FIG 6A/2
Min (A)	4141	ICAO	Annex 14 FIG 2.10



atg airports ltd
 Lowton Business Park | Newton Road
 Lowton St. Mary's | Warrington
 WA3 2AP | United Kingdom

atg airports inc
 7857 Drew Circle #11
 Fort Myers | Florida 33967
 USA

📞 UK: +44 (0) 1942 68 5555 | USA: 001 (239) 985-9406

🌐 www.atgairports.com ✉ products@atgairports.com ✉ sales-usa@atgairports.com

ZA483