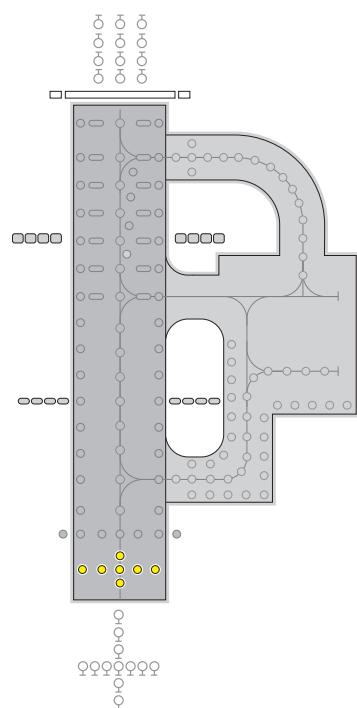




# ZA480

## Approach centreline & crossbar

High intensity unidirectional inset fitting



### Features

- ▶ Lightweight and robust due to its aluminium alloy construction
- ▶ Components that are common with ZA181 and ZA280 series
- ▶ Long life halogen lamps with a typical life of 1500 hours at full intensity or over 3500 hours in normal usage
- ▶ Standard adaptor rings to suit 15", 15.5" bases
- ▶ Prism removal and replacement achieved without the need for adhesive or sealants
- ▶ Colour beam variations achieved by dichroic coating
- ▶ Lamp bypass options available when required
- ▶ Pre-focused optics to simplify maintenance procedures
- ▶ Light channel within 5mm of grade
- ▶ Plug for pressure testing
- ▶ Water Ingress rating - IP67
- ▶ Low temperature - temperature at centre of top cover remains below 160°C ICAO and FAA limit
- ▶ All fasteners are stainless steel
- ▶ IMM available on request

### Compliance with standards

ICAO	Annex 14
FAA	AC150/5345-46D, L-850A,B,C, D, E Class I & IIB
NATO	STANAG 3316
CAA	CAP168
Transport Canada	MOS139

### Application

Uni-directional inset fitting suitable for use in category I, II and III all weather operation airfield lighting systems as:

- ▶ Approach Centreline
- ▶ Crossbar

### Options

- ▶ ZM480 seating pot (wet)
- ▶ ZM480 seating pot (dry)
- ▶ PSA & FAA adaptors
- ▶ ZS023 sighting device
- ▶ ZM500/4 lifting handle
- ▶ ZM480 installation jig
- ▶ 6mm protrusion also available

## Electrical supply

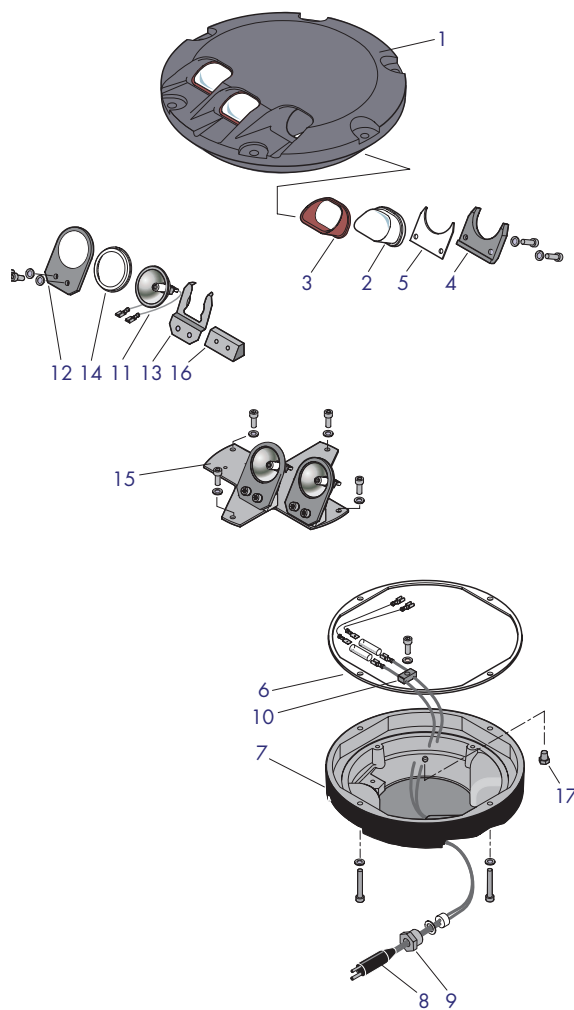
Suitable for use in 6.6A airfield lighting circuits normally supplied from 100W, 200W or 300W isolating transformers.

## Packaging data

Net weight	9.3kg
Gross weight	10kg
Carton size	50mm(w) x 330mm(d) x 330mm(h)

## Components

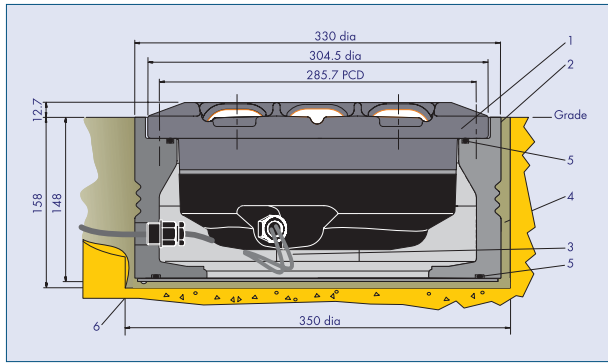
1	Body casting uni-directional (golden yellow)	Not Saleable
2	Clear prism or blank for prism aperture	SLC16069 SLC40092
3	Prism gasket	SLC33075
4	Prism clamp	SLC32037
5	Prism clamp gasket	SLC33069
6	Bottom cover gasket	SLC33076
7	Bottom cover casting (single lead) or bottom cover casting (twin lead) or bottom cover casting (three lead)	Not Saleable Not Saleable SLC40114
8	'B' type plug lead	SLC13026
9	Cable gland assembly	SLC21282/3/4
10	Cable clamp	SLC21281
11	Reflector lamp 105W	SLC08075
12	Lampholder	SLC32040
13	Lamp retaining spring	SLC32039
14	Lamp gasket	SLC33077
15	Mounting plates: Approach, Siderow and Wingbar	SLC21278
16	Lampholder support block	SLC21285
17	Pressure test plug	SLC21256



## Typical installation methods

- In a 12" dia seating pot, atg airports ltd type ZM480
- In a 12" FAA L-868 Base

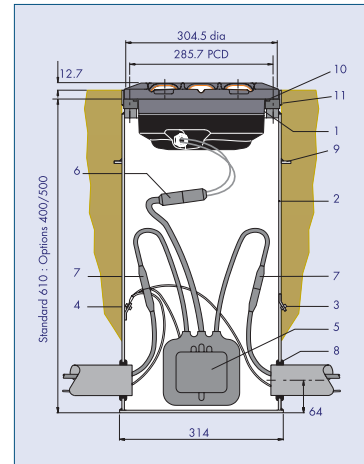
ZA480 Installed in ZM480 Seating Pot (dry version)



1. ZA480 Fitting
2. ZM480 Seating Pot
3. Secondary Connection
4. Grout
5. 'O' Ring
6. Cable Gland

**Note** ZM480 Wet seating pot arrangement information available on request.

ZA480 Installed on FAA L-868 Base



1. ZA480 Fitting
2. FAA L-868 Base (one piece)
3. Outer earth terminal (optional)
4. Inner earth terminal (optional)
5. Isolating transformer
6. Secondary connection
7. Primary connection
8. Grommet
9. Anchor ring
10. 'O' Ring
11. Dam ring

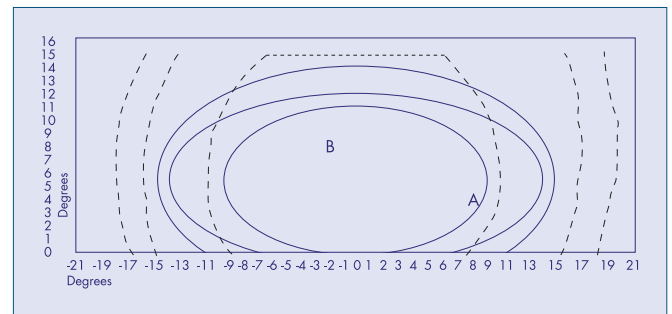
## Photometric performance

### Approach Inset Fitting: (Threshold to 315m)

White	ZA480
Main Ellipse Intensity Measurements (Candelas)	
Average	21316
Min. Average	20000
Max (B)	27978
Min (A)	13063

### Nominal Lamp Details

Power	3 x 105 Watts
Current	6.6 Amps
Type	Cold Reflector Lamp
ICAO	CAP168
Annex 14	FIG 6A/1
FIG 2.1	



**Head Office:**  
**atg airports ltd**  
 Lowton Business Park | Newton Road  
 Lowton St. Mary's | Warrington  
 WA3 2AP | United Kingdom

atg airports reserve the right to change technical data and details at any point in time. Errors may have occurred



UK: +44 (0) 1942 68 5555 | USA: 001 (239) 985-9406

www.atgairports.com enquiries@atgairports.com sales-usa@atgairports.com

**ZA480**