

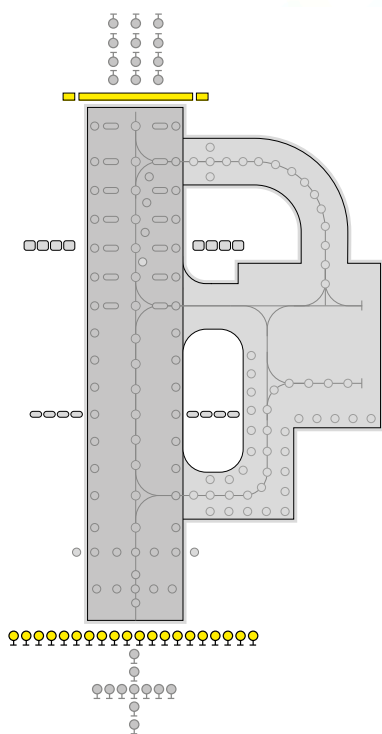
Tungsten halogen technology



ZA426

Threshold & Threshold Wingbar

High intensity, uni-directional elevated light



Features

- ▶ Lightweight yet robust due to its aluminium alloy 'double skinned' construction
- ▶ No external colour filters required
- ▶ Smooth outer glass surface resists build up of dirt and is easy to clean
- ▶ Pre-focused optics simplify maintenance procedures
- ▶ Lamp replacement effected without requiring any tools
- ▶ Low windage area
- ▶ Choice of 'gimble' mounting methods - M32 stem, M25 stem or 50/60mm O/D coupling for approach pole structures
- ▶ Light head replacement effected without any resighting required
- ▶ Powder coat paint finish in golden yellow. All fasteners are stainless steel
- ▶ IMM available on request

Compliance with standards

FAA	E-982 and L-862S, AC150/5345-46
ICAO	Annex 14
CAA	CAP168
NATO	STANAG 3316
BS3224	Part 4, elevated fittings

Application

High intensity, uni-directional, elevated runway end and supplementary approach lights suitable for use in all weather operation installations up to ICAO category III systems.

Options

- ▶ ZS022 sighting device
- ▶ Pk 30d halogen lamps
 - ▶ J1/80 100W 6.6A - runway end
 - ▶ J1/83 150W 6.6A - approach & threshold
 - ▶ J1/84 200W 6.6A - siderow & threshold wingbar

UK: +44 (0) 1942 68 5555 | USA: 001 (239) 985-9406

www.atgairports.com | products@atgairports.com | sales-usa@atgairports.com

ZA426

Electrical supply

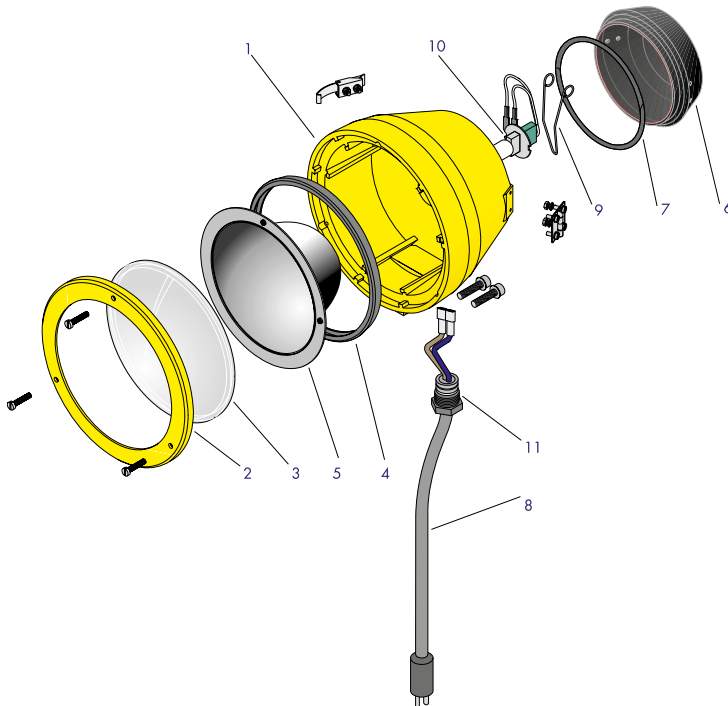
Suitable for use in 6.6A airfield lighting circuits, normally supplied from one 100W, 150W or 200W series circuit isolating transformer. Power consumption is 100W, 150W or 200W depending upon application.

Packaging data (head only)

Net weight	1.8kg
Gross weight	2.4kg
Carton size	225mm(w) x 225(d) x 260mm(h)

Components

1	Body casting (golden yellow)	Not saleable
2	Rim	SLC40122
3	Clear spreader	SLC16074
	or red	SLC19170
	or green	SLC19171
4	Reflector edge seal	SLC33078
5	Reflector - clear	SLC28049
	or reflector	
	red/green	SLC28050
6	Rear cover	SLC40121
7	Rear cover seal	SLC33079
8	300mm 'B' type plug lead	SLC13001
9	Lamp spring	SLC32056
10	J1/80 100W 6.6A Pk30d lamp	SLC08057
	or J1/83 150W	SLC08056
	or J1/84 200W	SLC08069
11	Cable gland assembly	SLC21114/5/6



UK: +44 (0) 1942 68 5555 | USA: 001 (239) 985-9406

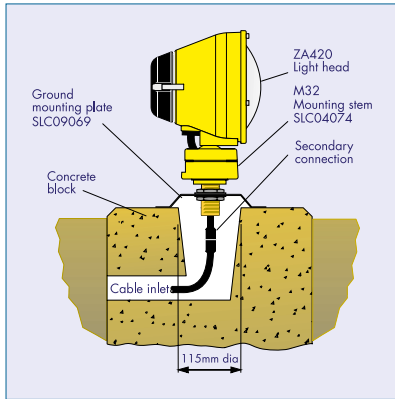
www.atgairports.com products@atgairports.com sales-usa@atgairports.com

ZA426

Typical installation methods

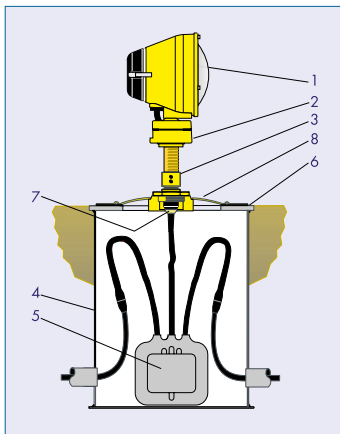
- On a 204mm (8") dia. ground mounting plate (ZM120/1)
- On a short approach pole up to 2.2m long
- On an FAA L867 type base can
- On a ground mounting spike
- On a FAA type frangible coupling
- Other installation methods available on request

ZA421 installed on 204mm (8") ground mounting plate



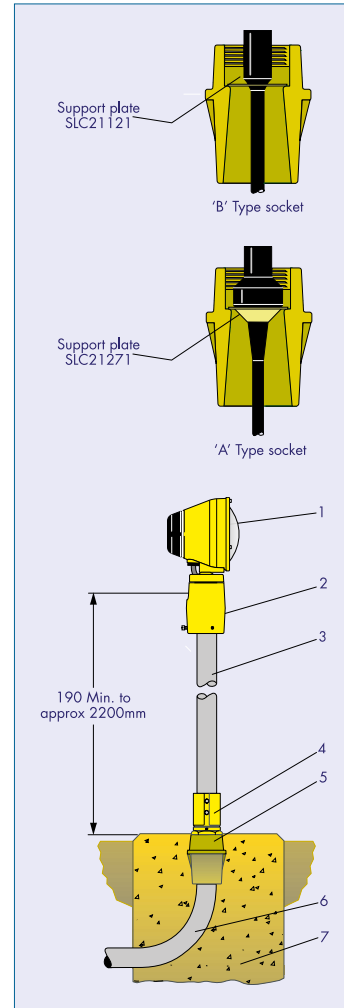
Note The ground mounting plate is designed to be held down by means of three 10mm (3/8") rag bolts grouted into the concrete block on 178mm PCD.

ZA421 installed on a FAA L867 base can



- | | |
|-----------------------|----------------------------|
| 1. ZA421 Light head | 5. Isolating transformer |
| 2. M32 Mounting Stem | 6. Gasket |
| 3. Frangible coupling | 7. Support Plate |
| 4. FAA Type L867 base | 8. FAA Type L867 baseplate |

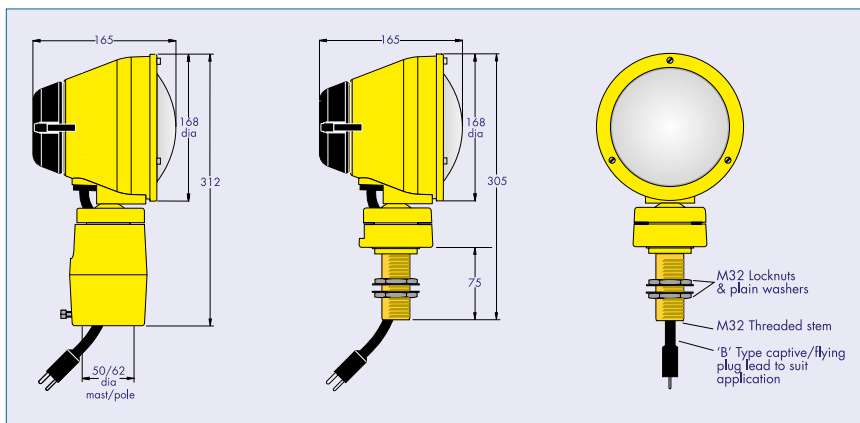
ZA421 installed on a short approach pole up to 2.2m long



Alternative support arrangements for 'A' or 'B' type socket lead mounted in a wells coupling.

- | | |
|--|-------------------------------------|
| 1. ZA421 Light head | 4. Frangible coupling |
| 2. Pole coupling | 5. Wells coupling |
| 3. Aluminium tube 50.8mm dia
O/D 10SWG length as required | 6. 50mm dia pipe (plastic or metal) |
| | 7. Concrete block |

ZA420 installed on 204mm (8") ground mounting plate



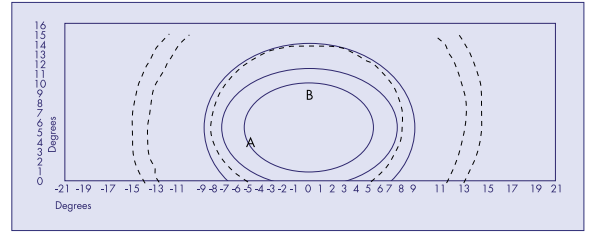
Note The ground mounting plate is designed to be held down by means of three 10mm (3/8") rag bolts grouted into the concrete block on 178mm PCD.

Photometric Performance

Threshold:

Green	ZA426
Main Ellipse Intensity Measurements (Candelas)	
Average	10762
Min. Average	10000
Max (B)	14866
Min (A)	7515

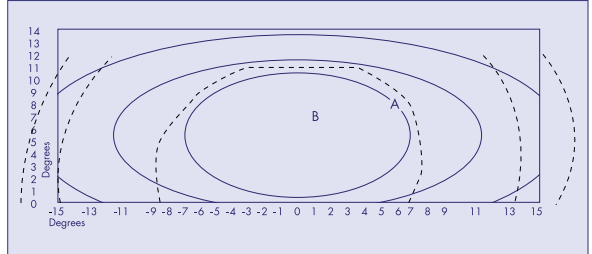
Nominal Lamp Details	
Power	200 Watts
Current	6.6 Amps
Type	J1/B4
ICAO	CAP168
Annex 14	FIG 6A.3



Threshold Wingbar:

Green	ZA426
Main Ellipse Intensity Measurements (Candelas)	
Average	11340
Min. Average	10000
Max (B)	16247
Min (A)	5769

Nominal Lamp Details	
Power	200 Watts
Current	6.6 Amps
Type	J1/B4
ICAO	CAP168
Annex 14	FIG 6A.4



atg airports ltd
 Lowton Business Park | Newton Road
 Lowton St. Mary's | Warrington
 WA3 2AP | United Kingdom

atg airports inc
 7857 Drew Circle #11
 Fort Myers | Florida 33967
 USA



UK: +44 (0) 1942 68 5555 | USA: 001 (239) 985-9406

www.atgairports.com | products@atgairports.com | sales-usa@atgairports.com

ZA426