

Tungsten halogen technology



ZA293

Runway Edge

Low intensity omni-directional inset fitting

Features

- Body casting manufactured from aluminium alloy for lightness, strength and durability
- IEC body style as standard, 8" 2 hole and 8" 3 hole versions available
- Long life lamps (objective life of 1500 hours at full brilliancy)
- Prism removal and replacement achieved without the need for adhesive or sealants
- 3 hole body option for direct installation to SRA8/13 adaptor ring
- Colour beam variations achieved by dichroic coated or coloured glass
- Lamp by-pass options available if required
- Suitable for direct installation in a ZM109, ZM181 or ZM203 IEC seating pot with only two point fixing
- Pre-focused optics to simplify maintenance procedures
- Low profile (10mm)
- Commonality of parts with the ZA181 and ZA280 inset fittings
- Light channel within 5mm of Grade
- Natural anodised finish (as standard), powder coated NATO green or golden yellow
- IMM available on request

Compliance with standards

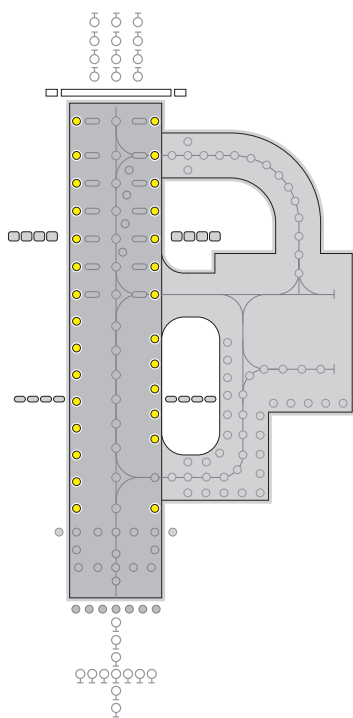
- **FAA** AC 150/5345-46C L-852E, L-852F, F-852T
- **ICAO** Annex 14 circular guidance 5.3.6, 5.3.9.8, 5.3.9.9
- **CAA** CAP168 Table 6A/1
Low intensity, taxiway edge and circular guidance
- **BS3224** Part 5, inset fittings
- **IEC** 61827
- **STANAG** 3316 Annex C fig 3

Application

Omni-directional inset fitting for Taxiway, Helipad, LI Runway Edge and general applications.

Electrical supply

Suitable for use in 6.6A airfield lighting circuits normally supplied from 1 x 45W, 65W or 100W isolating transformer. 120V and 240V mains supply versions also available. Power consumption is either 30W, 36W, 40W, 49W or 105W depending upon type of lamp fitted.



Options

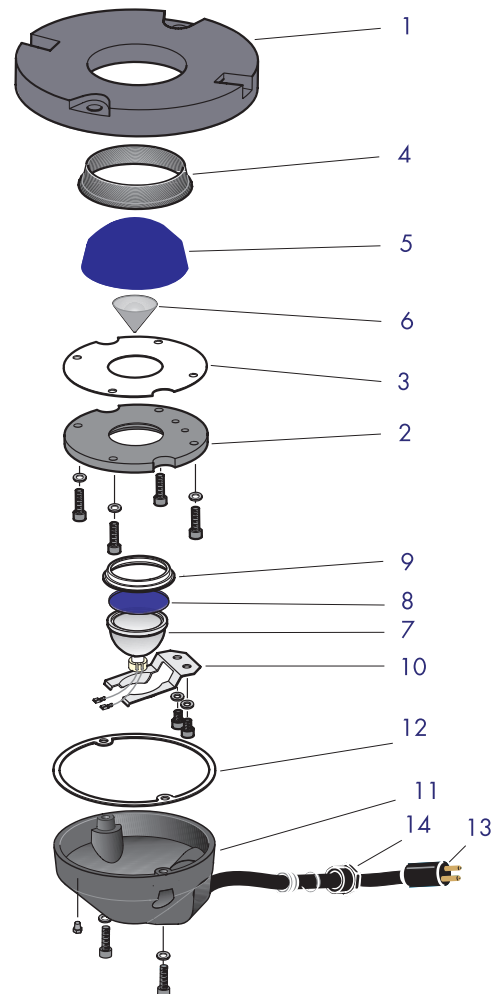
- ZM109 8" seating pot (wet)
- ZM181 8" seating pot (dry)
- ZM203 (I) seating pot (dry)
- ZM203 (I) seating pot (wet)
- 12" and 15.5" PSA & FAA L868 cannister adaptors
- ZS023 sighting device
- ZM109, ZM181, ZM203(I) installation jigs
- 500mm flying lead with 3-pin receptacle (120V and 240V version only)

Packaging data

Net weight	3kg
Gross weight	3.5kg
Carton size	230mm(w) x 230mm(d) x 146mm(h)

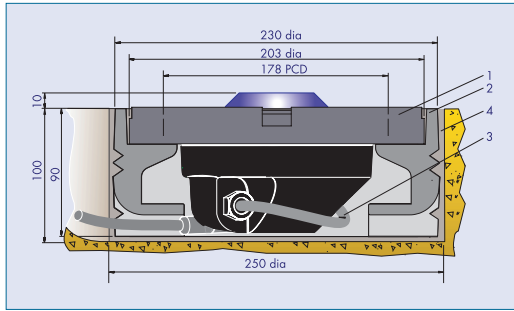
Components

1	Body casting (standard) or (SRA) or (IEC)	
2	Prism clamp (standard) (SRA) (IEC)	SLC21307 SLC21308
3	Prism clamp gasket	SLC21309
4	Prism gasket	SLC33090
5	Glass prisms:	
	Green	SLC19183
	Yellow	SLC19181
	Red	SLC19182
	Blue	SLC19180
	Clear	SLC16077
6	Reflector	SLC28051
7	Reflector lamps	
	30W	SLC08083
	36W	6A SLC08081
	49W	SLC08065
	105W (red light)	SLC08072
8	Glass filters:	
	Green	SLC19149
	Yellow	SLC19157
	Red	SLC19151
	Blue	SLC19152
9	Lamp gasket	SLC33077
10	Lamp retaining spring	SLC32039
11	Bottom cover casting (standard) or bottom cover spinning (SRA)	
12	Bottom cover gasket	SLC33080
13	'B' type plug lead	SLC13001
14	Cable gland assembly	SLC21114/5/6



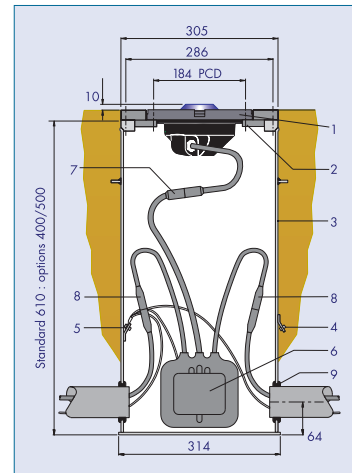
Typical installation methods

ZA292 installed in ZM109 seating pot



1. ZA292 fitting
2. ZM109 seating pot
3. Secondary lead
4. Grout

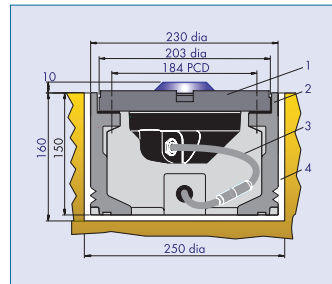
ZA292 IEC installed on FAA L-868 base



1. ZA292(I) fitting
2. 12" mounting adaptor
3. FAA L-868 base (one piece)
4. Outer earth terminal (optional)
5. Inner earth terminal (optional)
6. Isolating transformer
7. Secondary connection
8. Primary connection
9. Grommet

ZA292 IEC installed in ZM203(I) wet seating pot

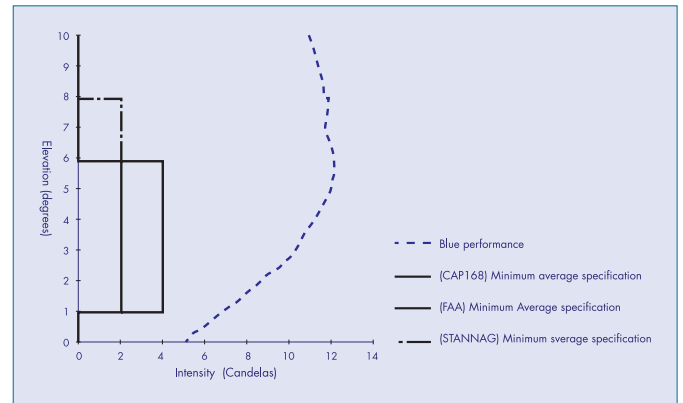
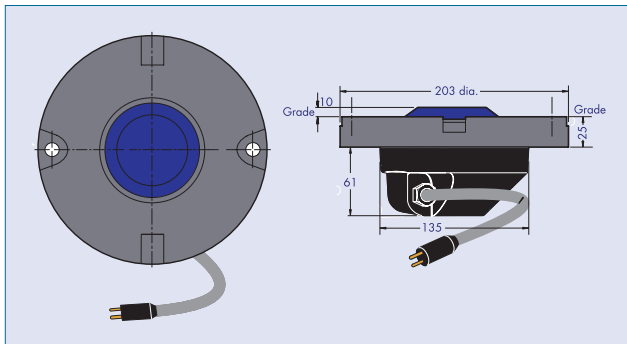
1. ZA292 IEC fitting
2. ZM203(I) seating pot
3. Secondary lead
4. Grout



Dry seating pot arrangement also available

Photometric performance

ZA292 General arrangement



atg airports ltd
 Lowton Business Park | Newton Road
 Lowton St. Mary's | Warrington
 WA3 2AP | United Kingdom

atg airports inc
 7857 Drew Circle #11
 Fort Myers | Florida 33967
 USA



UK: +44 (0) 1942 68 5555 | USA: 001 (239) 985-9406

www.atgairports.com | products@atgairports.com | sales-usa@atgairports.com

ZA293