



# ZA292

## Inset taxiway

Omni-directional inset light

ZA291 Low Intensity Runway End

ZA292 Taxiway Edge (Blue)

ZA293 Runway

ZA295 Low Intensity Threshold

ZA298 Intersection End Apron light

### Features

- Body casting manufactured from aluminium alloy for lightness, strength and durability
- IEC body style as standard, PSA 8" 2 hole and 8" 3 hole versions available
- 3 hole body option for direct installation to SRA8/13 adaptor ring
- Long life lamps (objective life of 1500 hours at full brilliancy)
- Prism removal and replacement achieved without the need for adhesive or sealants
- Colour beam variations achieved by dichroic coated or coloured glass
- Lamp by-pass options available if required
- Suitable for direct installation in a ZM109, ZM181 PSA or ZM203 IEC seating pot with only two point fixing
- Pre-focused optics to simplify maintenance procedures
- Low profile (10mm)
- Commonality of parts with the ZA181 and ZA280 inset fittings
- Light channel within 5mm of Grade
- Natural anodised finish (as standard), powder coated NATO green or golden yellow (Special Order)
- IMM available on request

### Compliance with standards

- **FAA** AC 150/5345-46D L-852E, L-852F, F-852T
- **ICAO** Annex 14 circular guidance 5.3.6, 5.3.9.8, 5.3.9.9
- **BS3224** Part 5, inset fittings
- **IEC** 61827
- **STANAG** 3316 Annex C fig 3, taxiway edge 5.3.18.7, 18.8 apron lights 5, 3, 27

### Application

Omni-directional inset fitting for Taxiway, Helipad, LI Runway Edge and general applications.

### Options

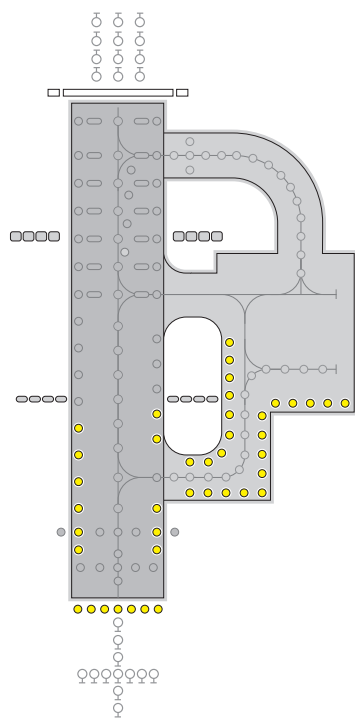
- ZM109 8" seating pot (wet) - PSA 2/3 Hole
- ZM181 8" seating pot (dry) - PSA 2 Hole
- ZM203 (I) seating pot (dry) - IEC
- ZM203 (I) seating pot (wet) - IEC
- 12" and 15.5" PSA & FAA L868 cannister adaptors
- ZS023 sighting device
- ZM109, ZM181, ZM203(I) installation jigs

### Electrical supply

Suitable for use in 6.6A airfield lighting circuits normally supplied from 1 x 45W, 65W or 100W isolating transformer. 120V and 240V mains supply versions also available. Power consumption is either 30W, 36W, 40W, 49W or 105W depending upon type of lamp fitted.

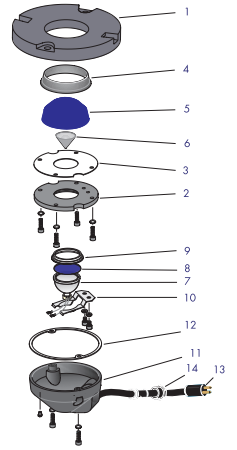
### Packaging data

Net weight	3kg
Gross weight	3.5kg
Carton size	230mm(w) x 230mm(d) x 146mm(h)



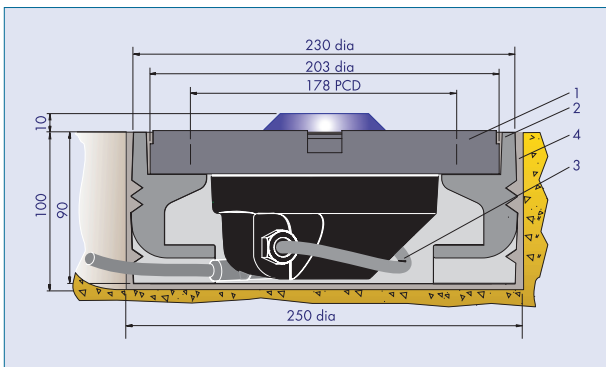
## Components

1	Body casting (standard PSA) or (SRA) or (IEC)	Not Saleable Not Saleable Not Saleable	7	Reflector lamps	
2	Prism clamp (standard) (SRA) (IEC)	SLC21307 SLC21308	30W		SLC08083
3	Prism clamp gasket	SLC21309	36W		SLC08081
4	Prism gasket	SLC33090	48W		SLC08065
5	Glass refraction:		105W (red light)		SLC08072
	Green	SLC19183	8	Glass filters (with clear):	
	Yellow	SLC19181		Green	SLC19149
	Red	SLC19182		Yellow	SLC19157
	Blue	SLC19180		Red	SLC19151
	Clear	SLC16077	9	Lamp gasket	SLC33077
6	Reflector (Integral with 3)	SLC28051	10	Lamp retaining spring	SLC32039
			11	Bottom cover casting (standard) or bottom cover spinning (SRA)	Not Saleable Not Saleable
			12	Bottom cover gasket	SLC33080
			13	'B' type plug lead	SLC13001
			14	Cable gland assembly	SLC21114/5/6



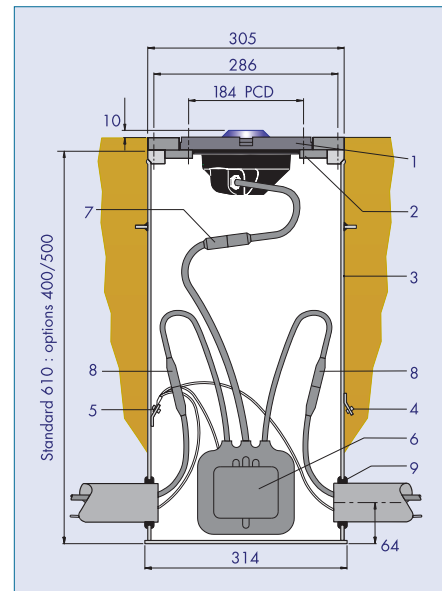
## Typical installation methods

ZA292 installed in ZM109 seating pot



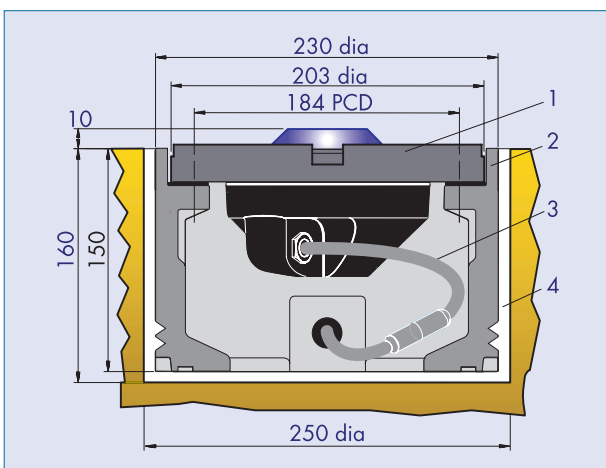
1. ZA292 fitting
2. ZM109 seating pot
3. Secondary lead
4. Grout

ZA292 IEC installed on FAA L-868 base



1. ZA292(I) fitting
2. 12" mounting adaptor
3. FAA L-868 base (one piece)
4. Outer earth terminal (optional)
5. Inner earth terminal (optional)
6. Isolating transformer
7. Secondary connection
8. Primary connection
9. Grommet

ZA292 IEC installed in ZM203(I) wet seating pot

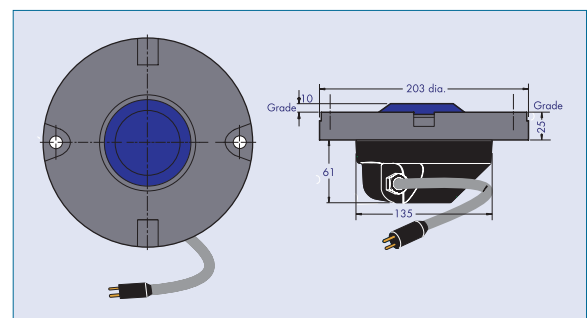


1. ZA292 IEC fitting
2. ZM203(I) seating pot
3. Secondary lead
4. Grout

Dry seating pot arrangement also available

Note: ZA291, ZA293, ZA295, ZA298 are generic with the ZA292

ZA292 General arrangement



UK: +44 (0) 1942 68 5555 | USA: 001 (239) 985-9406

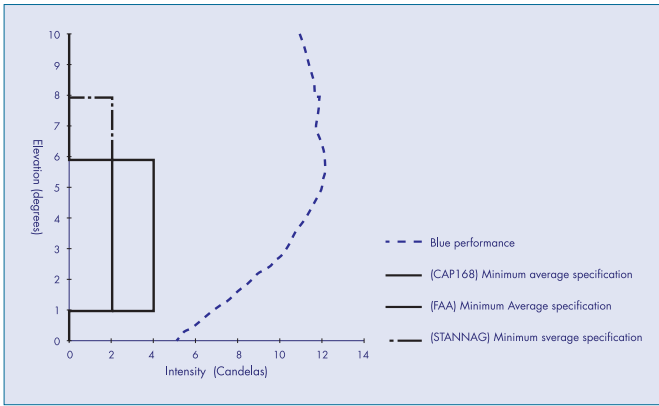
www.atgairports.com

products@atgairports.com

sales-usa@atgairports.com

ZA292

## Photometric performance



## Specification

**TYPE:** Blue omni-directional, taxiway, or low intensity taxiway edge and circular guidance.

The taxiway light shall comply with ICAO Annex 14 for use in category I, II and III all weather operations, CAP168, BS3224 Part 5, FAA and STANAG 3316. Fittings shall be modular in design with the main casting manufactured in aluminium alloy, suitably protected against corrosion and finished in natural anodised or golden yellow or NATO green.

The optical system shall comprise of a 48 MRCS reflector lamp. One glass prism refractor shall be accurately located in the main casting, without the need for additional adhesives or sealants, to direct the light beams such that no re-focusing is required on installation, maintenance or in service.

Lamp replacement shall be easily effected from the bottom of the fitting.

The light fitting shall have an upper surface forming a smooth sloping face projecting not more than 12mm above the pavement surface. The fitting shall resist all stresses imposed by impact, rollover and static loads of present day aircraft without damage to the fitting or to aircraft and vehicle tyres.

The fitting shall be suitable for installation in the pavement surface in a cast aluminium seating pot, type ZM109, or for dry installation applications, type ZM181, or ZM203 IEC. Other mounting adaptors shall be available to allow installation on FAA L868 canisters.

A handbook shall be provided giving full installation, operation and maintenance instructions together with a detailed parts list.

## Variants

- ZA291 - Low Intensity Threshold
- ZA292 - Taxiway Edge (Blue)
- ZA293 - Runway Circular Guidance (White)
- ZA295 - Low Intensity Runway End
- ZA298 - Apron Light (Yellow)



atg airports ltd  
Lowton Business Park | Newton Road  
Lowton St. Mary's | Warrington  
WA3 2AP | United Kingdom

atg airports inc  
7857 Drew Circle #13  
Fort Myers | Florida 33967  
USA



UK: +44 (0) 1942 68 5555 | USA: 001 (239) 985-9406

[www.atgairports.com](http://www.atgairports.com)

[Enquiries@atgairports.com](mailto:Enquiries@atgairports.com)

[sales-usa@atgairports.com](mailto:sales-usa@atgairports.com)

ZA292