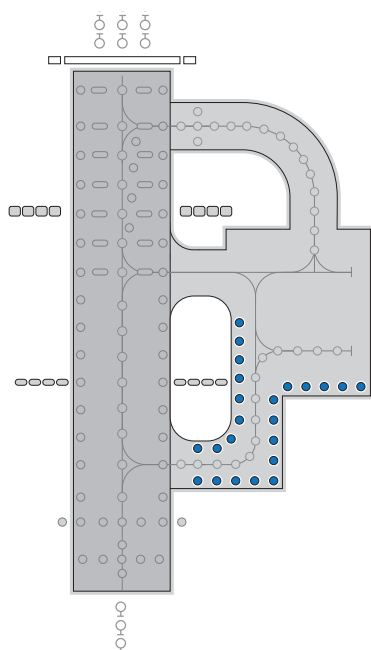




ZA216

Taxiway Edge, Apron, Helipad & Low Intensity Runway Edge

Omni-directional elevated light



Features

- ▶ Lightweight and robust due to its predominantly aluminium alloy construction which also gives good corrosion resistance.
- ▶ Removal of glass dome for lamp replacement or maintenance achieved without the need for any tools due to the simple bayonet fit of the glass.
- ▶ Long life halogen lamps with a typical life of 1500 hours at full intensity or over 3500 hours in normal usage
- ▶ Ball joint mounting arrangement facilitates levelling of the light on installation.
- ▶ Choice of mounting stems available (M32 threaded or 25mm (1") plain).
- ▶ Mounting stem compatible with 2" BSP Mounting using frangible coupling.
- ▶ Frangibility inherent in the M32 threaded mounting stem.
- ▶ Smooth outer glass surface resists build up of dirt.
- ▶ Bi-pin or PK30D lamp options.
- ▶ Optional lamp by-pass device can be fitted if required.
- ▶ Powder coat paint finish in golden yellow.

- ▶ IMM available on request.
- ▶ Water Ingress rating - minimum IP54

Compliance with Standards

As a taxiway edge light (blue glass dome):

ICAO	Annex 14, clause 5.3.17.4
FAA	FAA L-861T
CAA	CAP168 Table 6A/1 item 8 BSI: BS3224 Part 4, elevated fittings
NATO	STANAG 3316

As a runway edge light (clear glass dome):

FAA	FAA L-860 & L861
CAA	CAP168 Table 6A/1 item 2
BSI	BS3224 Part 4
NATO	STANAG 3316

Application

Taxiway/apron/helipad edge light or low intensity runway edge light.

Options

- Lamps:
 - J1/74 30W 6.6A bi-pin
 - J1/75 36W 6.6A bi-pin
 - J1/59 36W 6.0A bi-pin
 - J1/57 45W 6.6A bi-pin
 - J1/76 45W 6.6A PK30D
- Glass domes:
 - Blue
 - Clear
 - Red
 - Red/Green
 - White/Yellow

Electrical supply

Suitable for use in 6.6A airfield lighting circuits normally supplied from 1 x 45W isolating transformer. Power consumption varies between 30W and 45W depending upon type of lamp used.

Packaging Data

Net weight	0.9kg
Gross weight	1.0kg
Carton size	120mm(w) x 120mm(d) x 260mm(h)

Components

- Body casting
- Glass dome:
 - Blue
 - Clear
 - Red
 - Red/green
 - White/yellow
- Cup washer
- Lampholder ZB013/1
- 'O' Ring

M32 Threaded Stem Option

- 'B' Type plug lead assy
- Strain relief bush
- Locknut (3)
- Washer (3)
- M32 Stem assy

25mm (1") Plain Stem Option

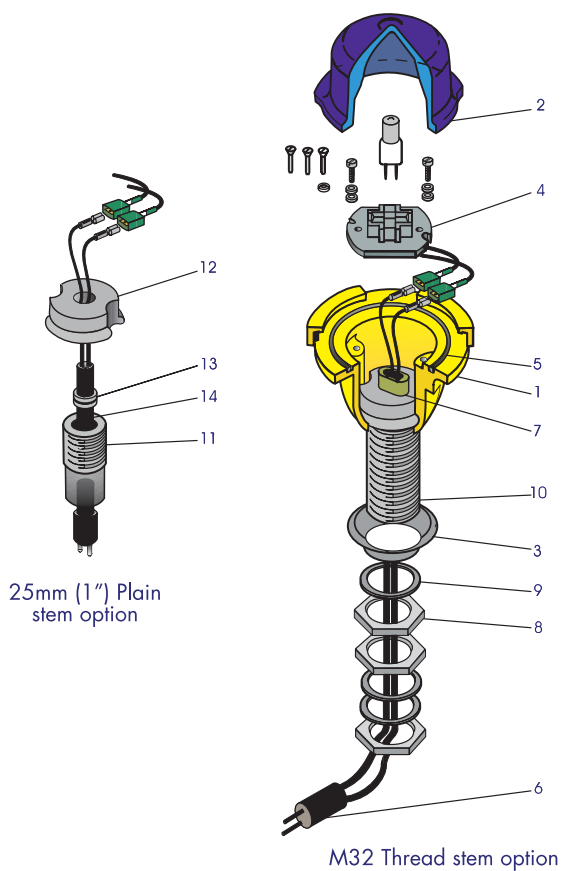
- Locknut (1)
- Washer (1)
- 25mm dia. stem
- Stem cap
- Strain relief bush
- 'B' Type plug lead assy

Not saleable

SLC19137
SLC16066
SLC19148
SLC19147
SLC19146
DRG28623
SLC15047
SLC33056

SLC13013
SLC39079
SLC21153
SLC21151
SLC21150

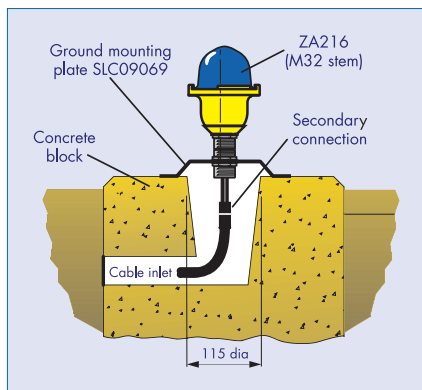
SLC21153
SLC21151
SLC21178
SLC21177
SLC21260
SLC13014



Typical installation methods

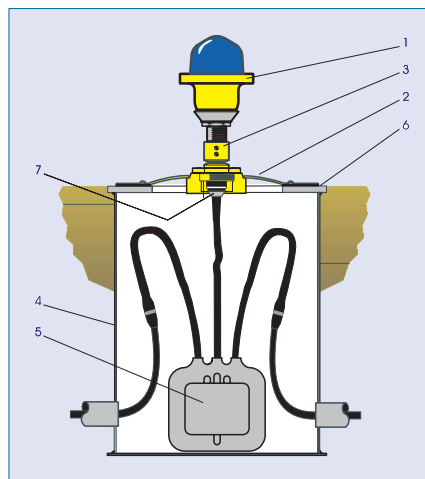
- On a 204mm (8") dia. ground mounting plate
- On a FAA L867 type base can

ZA216 Installed on 204mm (8") ground mounting plate



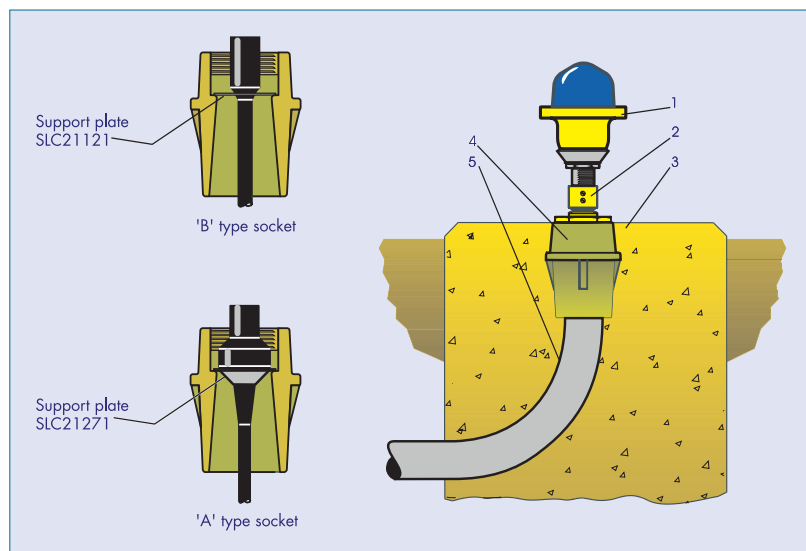
Note The ground mounting plate is designed to be held down by means of three 10mm (3/8") rag bolts grouted into concrete block on 178 PCD. The M32 stem is inherently frangible.

ZA216 Installed on a FAA L867 base can

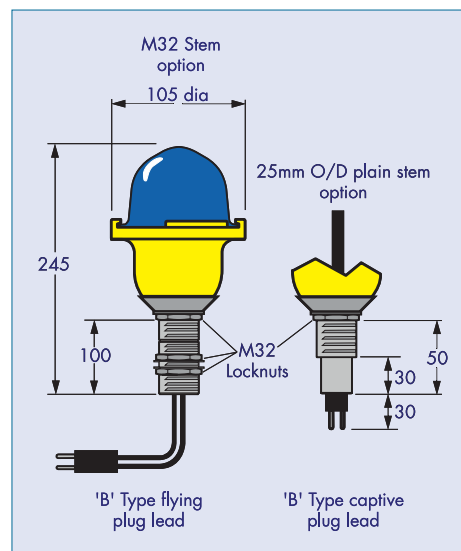


- | | |
|------------------------------|--------------------------|
| 1. ZA216 25mm O/D Plain stem | 5. Isolating transformer |
| 2. FAA Type L867 baseplate | 6. Gasket |
| 3. Frangible coupling | 7. Support Plate |
| 4. FAA Type L867 base | |

ZA216 Installed on a FAA type frangible coupling



ZA216 general arrangement coupling



Alternative support arrangement for 'A' or 'B' type socket/leads mounted in a wells coupling

- | | |
|--------------------------------|--------------------------------------|
| 1. ZA216 25mm O/D plain system | 4. Wells coupling |
| 2. Frangible coupling (2" BSP) | 5. 50mm dia. pipe (plastic or metal) |
| 3. Concrete block | |

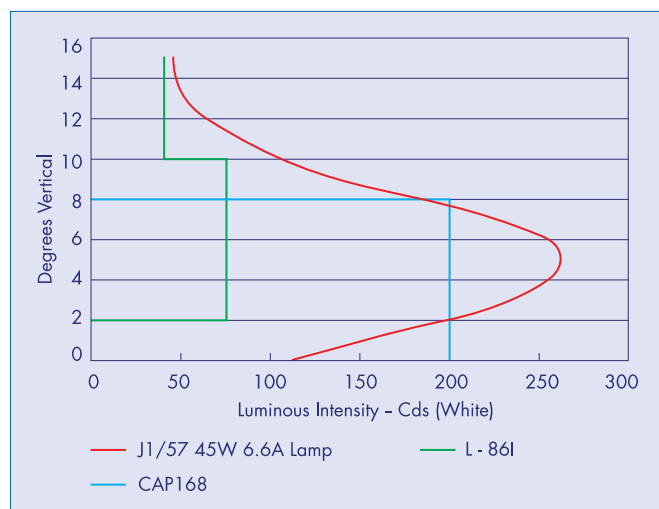
All dimensions are in mm, and are for information only

UK: +44 (0) 1942 68 5555 | USA: 001 (239) 985-9406

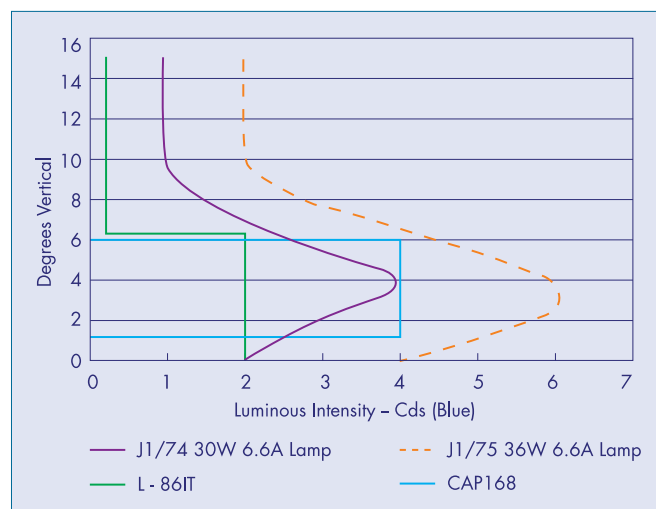
www.atgairports.com enquiries@atgairports.com sales-usa@atgairports.com

ZA216

Photometric performance



Low Intensity Runway Edge Light (White)



Taxiway Edge Light (Blue)

Order Codes

FITTING TYPE	STOCK LIST CODE (SLC)	COLOUR GLASS	STEM	BYPASS DEVICE
1	02093	C	Clear	M32
2	02092	B	Blue	M32
2A	02120	B	Blue	M32
5	02107	C	Clear	25mm
6	02106	B	Blue	25mm
6A	02121	B	Blue	25mm

For other colours please contact [atg](#).



Head Office:

atg airports Ltd

Lowton Business Park | Newton Road

Lowton St. Mary's | Warrington

WA3 2AP | United Kingdom

atg airports reserve the right to change technical data and details at any point in time. Errors may have occurred

**THINK
BEFORE YOU
PRINT**



📞 UK: +44 (0) 1942 68 5555 | USA: 001 (239) 985-9406

🌐 www.atgairports.com ✉ enquiries@atgairports.com ✉ sales-usa@atgairports.com

ZA216