

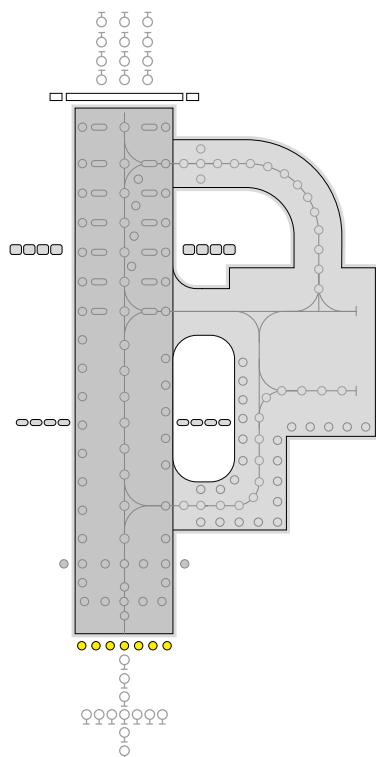
Tungsten halogen technology



ZA182

Runway end

High intensity uni directional inset light



Features

- Lightweight and robust due to its aluminium alloy construction which also gives good corrosion resistance.
- Red dichroically coated lens.
- Full range of FAA and PSA adaptors available.
- Long life, low energy lamps (1500 hrs/105W 6.6A at full brilliancy) - 1 off per fitting.
- Pre-focused optics simplify maintenance procedures.
- Light channel within 5mm from Grade.
- Two point fixing into mounting adaptor/seating pot for faster installation and removal of light fitting.
- Low profile (12mm) to reduce possibility of damage to aircraft and vehicle tyres.
- Prism accurately located and secured in the body casting without the need for sealing compound to facilitate removal and replacement
- All fasteners are stainless steel
- IMM available on request

Compliance with standards

- **FAA** AC 150/5345-46D/L-850D
- **ICAO** Annex 14 3rd Edition, fig 2.8
- **NATO** STANAG 3316
- **CAA** CAP168, fig 6A/8 BS3224: Part 5, inset fittings
- **EASA** U12

Application

Runway end fitting for use in category I, II & III all weather operation airfield lighting systems.

Options

- BS 12" adaptor flange
- BS 15.5" adaptor flange
- FAA 12" axial adaptor flange
- ZS023 sighting device
- Extractor tool
- ZM181 installation jig

Electrical supply

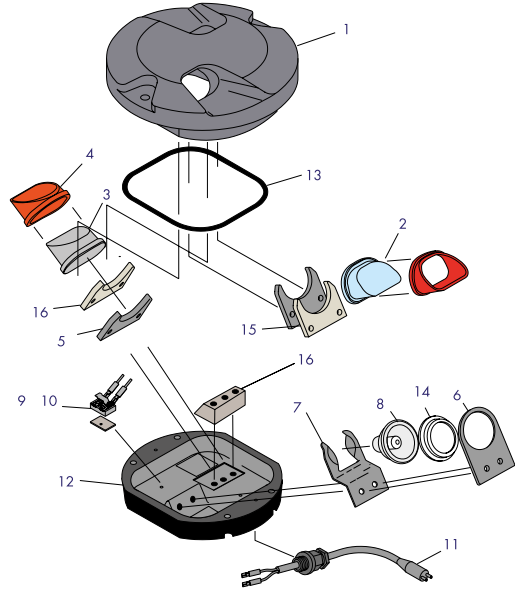
Suitable for use in 6.6A airfield lighting circuits, normally supplied from one 100W isolating transformer.

Packaging data

Net weight	5kg
Gross weight	6kg
Carton size	220mm(w) x 220mm(d) x 126mm(h)

Components

- 1 Body casting anodised aluminum
 - 2 Red prism
 - 3 Blank for prism aperture
 - 4 Prism gasket (2)
 - 5 Prism retaining clamp (2)
 - 6 Lampholder
 - 7 Lamp retaining spring
 - 8 Cold reflector lamp - 105W 6.6A
 - 9 Lamp by-pass disc assembly optional
 - 10 100W by-pass disc optional
 - 11 'B' type plug lead
 - 12 Base casting single lead
 - 13 Sealing gasket
 - 14 Lamp gasket
 - 15 Prism clamp gasket
 - 16 Lampholder support block
- SLC19141
 - SLC40092
 - SLC33075
 - SLC32037
 - SLC32040
 - SLC32039
 - SLC08075
 - SLC21135
 - SLC21135
 - SLC13026
 - Not saleable
 - SLC33070
 - SLC33083
 - SLC33069
 - SLC21296

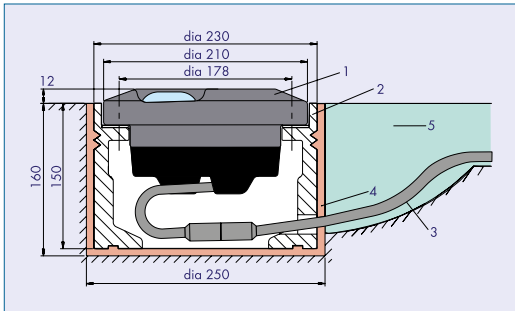


Typical installation methods

- In 8" dia seating pot
 - atg airports type ZM181 Adaptor rings (3BS or 4BS) enable the fitting to be mounted into new or existing standard PSA 12" and 15.5" dia seating rings.

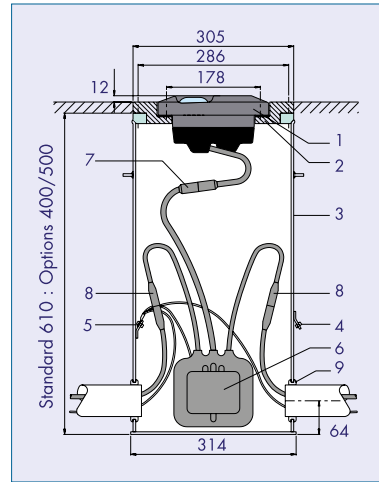
- In FAA 12" dia L-868 base
 - Installation on to FAA L-868 seating base can be achieved by using an 8 -12" adaptor ring (3FA, 3FR or 3FL).

ZA182 installed in ZM181 seating pot (dry)



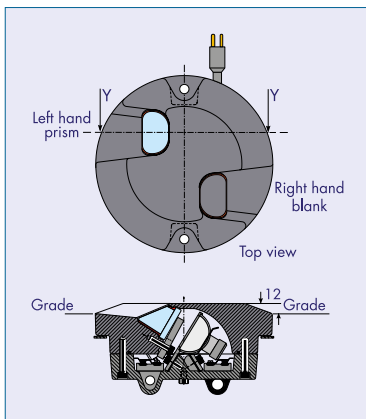
- 1. ZA182 fitting
- 4. Grout
- 2. ZM181 seating pot
- 5. Slotseal
- 3. Secondary lead

ZA182 installed on FAA L-868 base



- 1. ZA182 fitting
- 6. Isolating transformer
- 2. Mounting adaptor - axial
- 7. Secondary connection
- 3. FAA L-868 base (one piece)
- 8. Primary connection
- 4. Outer earth terminal (optional)
- 9. Grillet
- 5. Inner earth terminal (optional)

General Arrangement



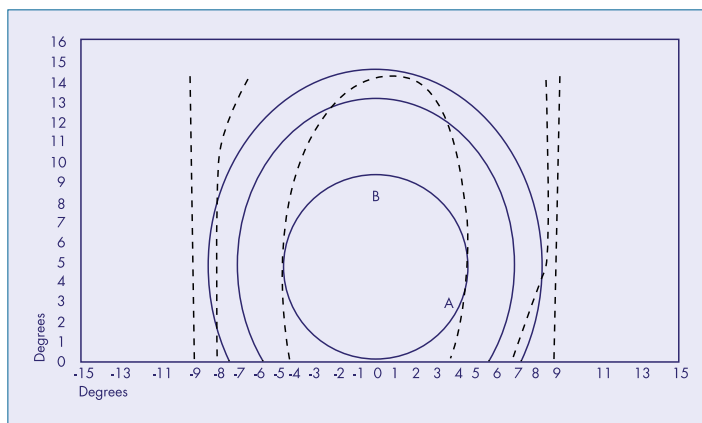
Photometric performance

Runway End

Red ZA182
 Main Ellipse Intensity Measurements (Candelas)
 Average 3443
 Min. Average 2500
 Max (B) 4399
 Min (A) 2566

Nominal Lamp Details

Power 105.0 Watts
 Current 6.6 Amps
 Type Cold reflector lamp
 ICAO CAP168
 ANNEX 14 FIG6A/B
 FIG 2.8



Ordering code

ITEM	COLOUR				PLUG LEAD 1 (B Type Lead, Single)	LAMP 1 (1 Lamp)	BYPASS DEVICE		FINISH	
	Left-hand Side		Right-hand Side				N (Not Fitted)	B (Fitted)	Y (Golden Yellow)	C (Anodised Aluminium)
	R (Red)	N (Blank)	R (Red)	N (Blank)						
ZA182R	R	N	N	N	1	1	N		Y	

See sales for mountin adaptor options



atg airports ltd
 Lowton Business Park | Newton Road
 Lowton St. Mary's | Warrington
 WA3 2AP | United Kingdom

atg airports inc
 7857 Drew Circle #11
 Fort Myers | Florida 33967
 USA



UK: +44 (0) 1942 68 5555 | USA: 001 (239) 985-9406

www.atgairports.com | products@atgairports.com | sales-usa@atgairports.com

ZA182