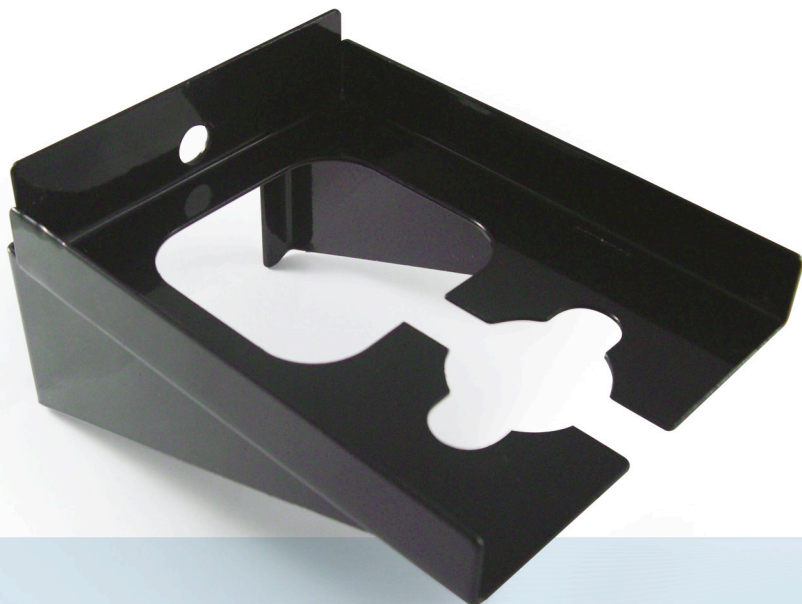


# Mounting Brackets



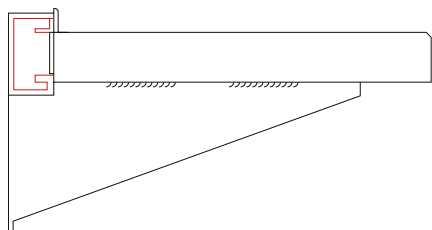
## Features

- Fabricated from 2mm thick hot rolled mild steel to BS 1449
- Finished with 'Permasint' polypropylene alloy to protect against corrosion
- Available in 2 styles to suit the most commonly used transformer designs, either:
  - Up to 100W transformer including a tan switch, or 150W without
  - Up to 300W transformer

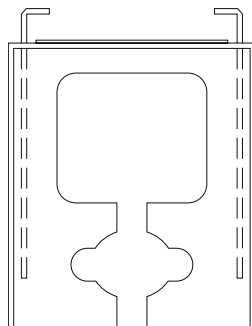
## Application

Mounting brackets designed for various isolating transformers and switching units. The bracket allows for the transformers to be kept out of standing water and separated from all other transformers, reducing the amount of time spent fault finding.

## Dimensions

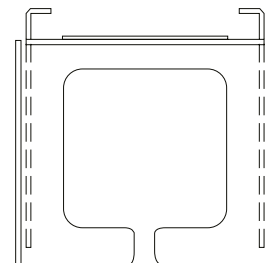


Mounted to channelling  
(Unistrut or similar)



5500-1100

Holds a 100W transformer with a tan switch, or 150W without



5500-1101

Holds up to a 300W transformer



**atg airports ltd**

Lowton Business Park | Newton Road  
Lowton St. Mary's | Warrington  
WA3 2AP | United Kingdom

**atg airports inc**

7857 Drew Circle #11  
Fort Myers | Florida 33967  
USA



📞 UK: +44 (0) 1942 68 5555 | USA: 001 (239) 985-9406

🌐 [www.atgairports.com](http://www.atgairports.com) ✉ [products@atgairports.com](mailto:products@atgairports.com) ✉ [sales-usa@atgairports.com](mailto:sales-usa@atgairports.com)

Mounting  
Brackets