



## Primary Connector Kits KD500 & KD510

### Features

KD500 & KD510 are designed for a fast-and-easy watertight connection between the primary cable and the series isolating transformer. The connectors are easy and quick to assemble.

KD500 & KD510 Primary connectors fit to a wide range of cable sizes and are FAA certified.

KD primary connectors are packed and delivered in kits that include all the necessary parts for making the assembly on primary cables. Each primary connector kit contains components for a pair (a plug and a receptacle). These silicon filled connectors fast to install and insulated screen continuity is available as an option.

Available for screened cables (KD500) and unscreened cables (KD510)

- Fast to install 5-10 min
- FAA certified
- Nominal rating: 25 A and 5000 V
- Superior isolation resistance by thermoplastic elastomer (TPE)
- Cable diameter 10,0 - 22,0 mm (0.393 - 0.866 inches)
- Conductor size 6 - 10 mm<sup>2</sup> (8 - 6 AWG)
- ROHS compliance with EU directive NO2002/95/EC

### Compliant to Latest International Standards

- ▶ ICAO Aerodromes - Annex 14
- ▶ FAA AC 5345-47, L-823  
Styles 3 and 10, Class B

# Series Circuit Primary kits

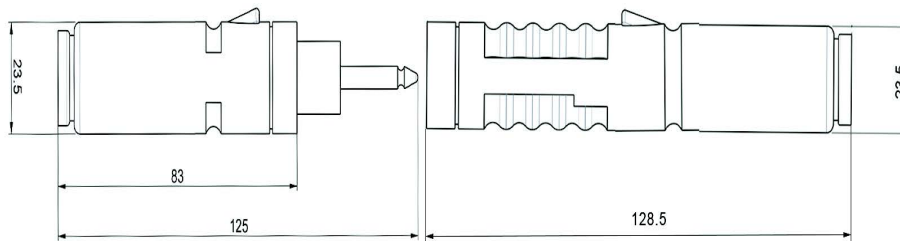


## Dimensional information

Type	Conductor size [mm <sup>2</sup> ]	AWG	Cable diameter [mm, inch]	Diameter at wire insulation [mm]	Diameter/Length of assembly [mm]
KD500	6	8**	10.0 – 14.5 mm,	7.0 – 10.5 mm,	23.5/222 mm,
KD500.1	6	8**	14.0 – 18.5 mm,	10.0 – 13.5 mm,	23.5/222 mm,
KD500.6	6	8**	8.5 – 11.5 mm,	12.5 – 16.0 mm	23.5/222 mm,
KD500.2	10*	6	14.0 – 18.5 mm,	12.5 – 16.0 mm	23.5/222 mm,
KD500.5	10*	6	10.0 – 14.5 mm,	7.0 – 10.5 mm,	23.5/222 mm,
KD510	6	8**	10.0 – 14.5 mm,	7.0 – 10.5 mm,	23.5/222 mm,
KD510.1	6	8**	14.0 – 18.5 mm,	10.0 – 13.5 mm,	23.5/222 mm,
KD510.6	6	8**	8.5 – 11.5 mm,	12.5 – 16.0 mm	23.5/222 mm,
KD510.2	10*	6	14.0 – 18.5 mm,	12.5 – 16.0 mm	23.5/222 mm,
KD510.5	10*	6	10.0 – 14.5 mm,	7.0 – 10.5 mm,	23.5/222 mm,

\*16 mm<sup>2</sup> stranded, \*\*up to 19 strands

## Outline drawing

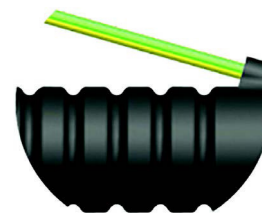


## Screen continuity KD500

The standard screen continuity for KD500 is a 300 mm long, 2.5 mm<sup>2</sup> tinned copper wire. Optionally, can be supplied with insulated screen continuity in yellow-green.



KD500



KD500Y/G

UK: +44 (0) 1942 68 5555 | USA: +1 (239) 985-9406

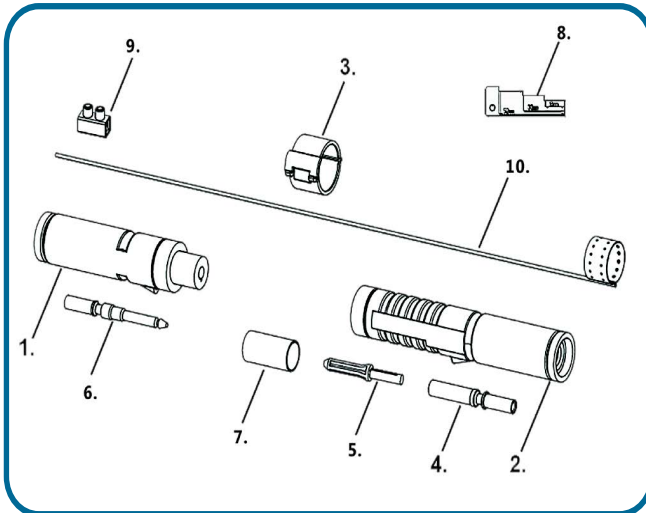
www.atgairports.com enquiries@atgairports.com sales-usa@atgairports.com

Primary kit  
KD500/510

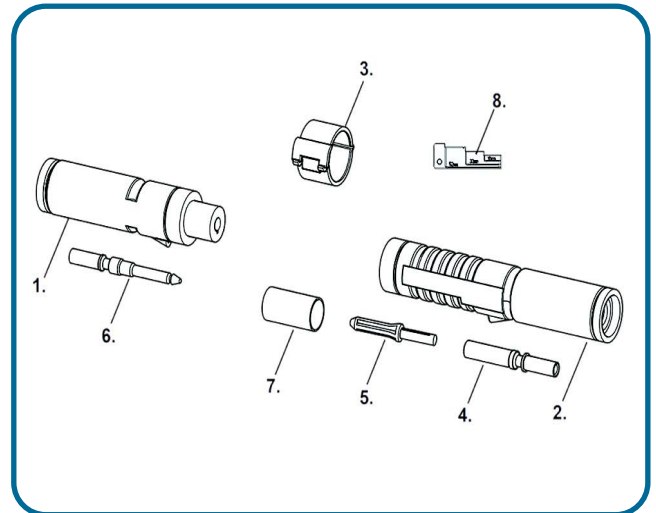
# Series Circuit Primary kits

## Primary Kit Contents

KD500 and KD510 are supplied in kit form and include all the necessary parts for connecting the assembly on the primary cable.



**KD500**



**KD510**

1. Plug elastomer housing (male)
2. Receptacle elastomer housing (female)
3. Locking device
4. Socket
5. Guiding pin (plastic)

6. Metal pin
7. Screen conducting wire and ring (x2)
8. Screw type connector (6mm<sup>2</sup>)
9. Measure/Gauge
10. Measure to strip cable

## Suggested crimping tool

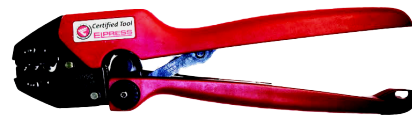
The following tools are recommended for making the connections:

Manual crimping tools:

- Elpress EWB 4099C
- KLAUKE K05/6
- KLAUKE K24
- KLAUKE K18

Electrical crimping tool:

- Elpress PVL 130S - WB4099



**Head Office:**  
**atg airports ltd**  
Lowton Business Park | Newton Road  
Lowton St. Mary's | Warrington  
WA3 2AP | United Kingdom

**THINK  
BEFORE YOU  
PRINT**



atg airports reserve the right to change technical data and details at any point in time. Errors may have occurred

Primary kit  
KD500/510

UK: +44 (0) 1942 68 5555 | USA: +1 (239) 985-9406

www.atgairports.com enquiries@atgairports.com sales-usa@atgairports.com

Rev 1 - 2021