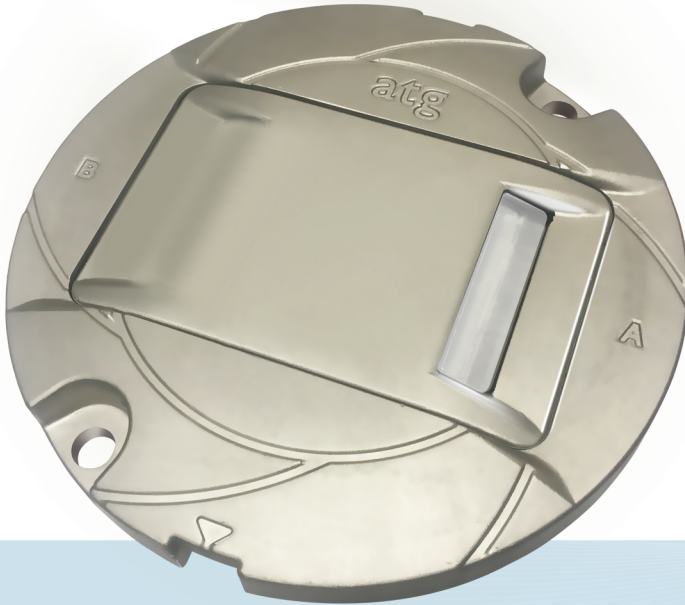
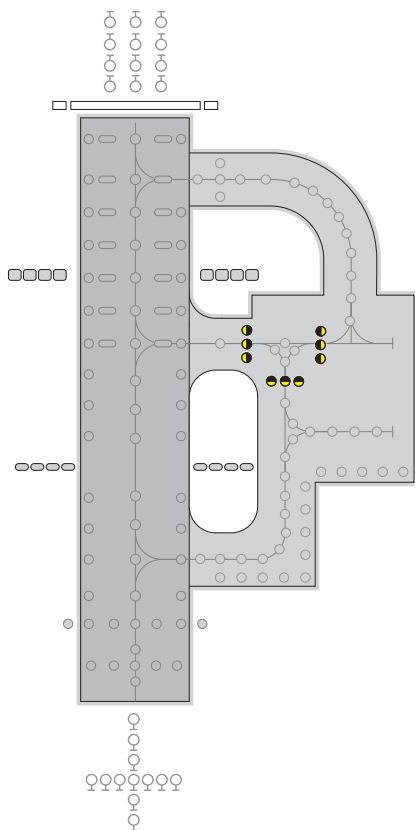


LED technology



IR852CB

IRIS LED 8" taxiway intermediate holding position and clearance bar (narrow), high intensity lighting solutions



Applications

CAT I/II/III all weather operation airfield ground lighting (agl) systems

Compliant with Latest International Standards*

- ▶ ICAO Annex 14. Vol 1
- ▶ FAA AC 150/5345-46
- ▶ FAA Engineering Brief No. 67
- ▶ IEC 61827†
- ▶ EASA†
- ▶ Stannag 3316 (NATO)

* As applicable to the application, compliance with other civil aviation and military regulations confirmed on request

IR852CB IRIS LED 8" taxiway intermediate holding position and clearance bar (narrow), high intensity lighting solutions



Electrical Performance

Main Beam Aperture		Colour	Typical Power Consumption - Watts (VA) @ 6.6A				
Horiz(°)	Vert(°)		Per Beam Watts	Fitting* Watts (VA)	PF	Tx Primary** Watts (VA)	PF
-3.5 to +3.5	1 to 8	YEL/BLK	1.49/-	11.32 (11.54)	0.995	20.65 (21.60)	0.965

Fixture Operational Current Range: 2.7 to 6.7A RMS

* as measured at the input leads of the fixture.

** as measured across the primary winding of an appropriately sized isolation transformer with a total fixture and transformer secondary length not exceeding - 1.85m (72").

Note: Isolating transformer shall be suitably sized to accommodate specific secondary and other applicable losses.

For Bi-directional twin lead option use unidirectional electrical performance for each direction.

Environmental Conditions

- ▶ Ambient Temperature -55 °C to +55°C (-67 °F to +131°F)
- ▶ Storage Temperature -55 °C to +55°C (-67 °F to +131°F)
- ▶ Ingress Protection IP67

Photometry

Specification

Holding position / clearance bar - Straight (Narrow) Yellow

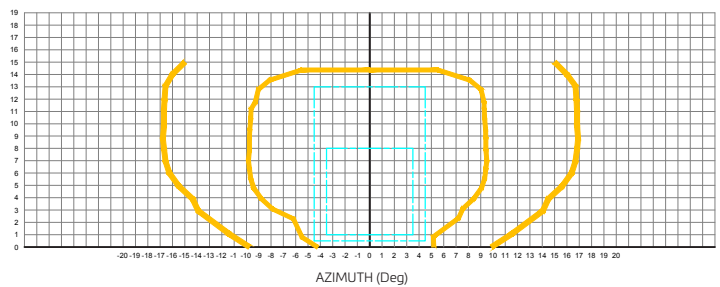
Colour	Yellow
Max/Min Intensity Ratio	<3.0
Main rect. average intensity	200 cds
Main rect. minimum intensity	100 cds
Second rect. minimum intensity	20 cds

Typical Measured Values

Taxiway Centreline - Straight (Narrow) Yellow

Colour	Yellow
Max/Min Intensity Ratio	1.96
Main rect. average intensity	462 cds
Main rect. maximum intensity (A)	584 cds
Main rect. minimum intensity (B)	299 cds
Second rect. minimum intensity	228 cds

Intensity Chart - Taxiway holding position & clearance bar (straight narrow) Yellow



IR852CB

IRIS LED 8" taxiway intermediate holding position and clearance bar (narrow), high intensity lighting solutions



Ordering Codes:



Application
L-852CB(L) Taxiway holding position and clearance bar, Straight (Narrow)

Beam Type
A Side
 4 = Straight (Narrow)
 0 = Blank

B Side
 4 = Straight (Narrow)
 0 = Blank

Colour
A Side
 Y = Yellow

B Side
 Y = Yellow

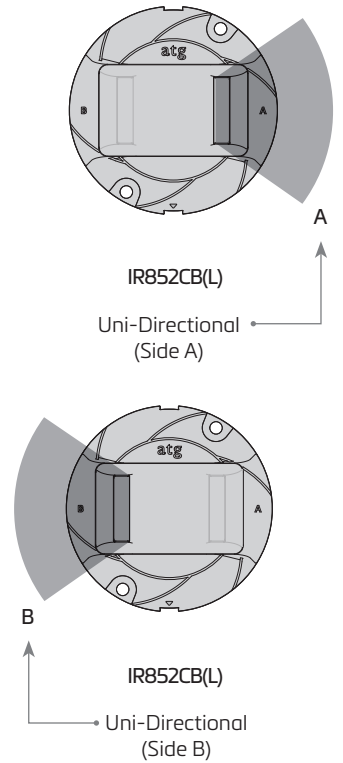
Specification
 1 = FAA
 2 = ICAO

Connections
 1 = 1 Bi Pin Plug

Fixture Monitoring - Fail Open Feature
 0 = No Open Circuit
 1 = Open Circuit

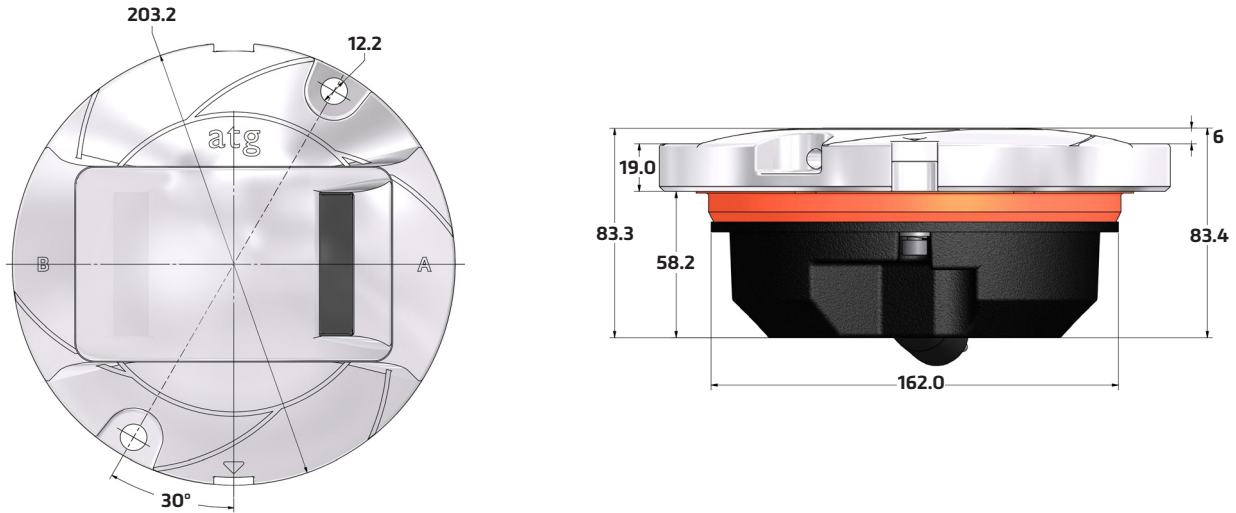
Additional optional features are available upon request

Beam Options



IR852CB IRIS LED 8" taxiway intermediate holding position and clearance bar (narrow), high intensity lighting solutions

Dimensions




Packaging

- ▶ Net weight 3.12Kg
- ▶ Gross weight 3.52Kg (boxed)
- ▶ Box 260mm (L) x 260mm (W) x 175mm (H)

*Dimensions are nominal

Consultants specification and installation information for the Iris range is available by request. Contact marketing@atgairports for further details.

atg airports reserve the right to change technical data and details at any point in time.



Head Office:
atg airports ltd
Lowton Business Park | Newton Road
Lowton St. Mary's | Warrington
WA3 2AP | United Kingdom

atg airports reserve the right to change technical data and details at any point in time. Errors may have occurred



UK: +44 (0) 1942 68 5555 | USA: 001 (239) 985-9406

www.atgairports.com | enquiries@atgairports.com | sales-usa@atgairports.com

IRIS LED AGL
L-852C