

LED technology



IR862C

IRIS LED elevated runway edge high intensity lighting solutions

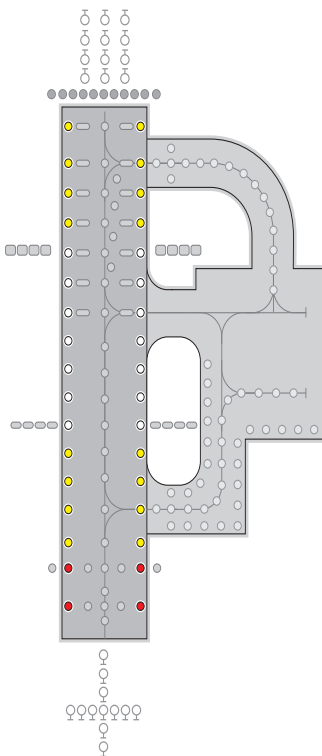
Applications

CAT III all weather operation airfield ground lighting (agl) systems.

Compliant with Latest International Standards*

- ▶ ICAO Annex 14. Vol 1
- ▶ FAA AC 150/5345-46
- ▶ FAA Engineering Brief No. 67
- ▶ IEC 61827
- ▶ EASA
- ▶ Stannag 3316 (NATO)

* As applicable to the application, compliance with other civil aviation and military regulations confirmed on request



IR862C IRIS LED elevated runway edge high intensity lighting solutions



Electrical Performance

Main Beam Aperture		Colour	Typical Power Consumption - Watts (VA) @ 6.6A				
Horiz(°)	Vert(°)		Per Beam Watts	Fitting* Watts (VA)	PF	Tx Primary** Watts (VA)	PF
-2 to +9	0 to 7	WHT/WHT	39.7/39.7	119 (119.6)	0.99	154.8 (155.8)	0.99
-2 to +9	0 to 7	WHT/YEL	39.7/16.2	88.3 (88.7)	0.99	123.9 (125.4)	0.98
-2 to +9	0 to 7	WHT/RED	39.7/12.5	85.7 (86.0)	0.99	120.8 (122.7)	0.98
-2 to +9	0 to 7	YEL/RED	16.2/12.5	55.0 (55.1)	0.99	89.9 (92.1)	0.98

Fixture Operational Current Range: 2.7 to 6.7A RMS

* as measured at the input leads of the fixture.

** as measured across the primary winding of an appropriately sized isolation transformer with a total fixture and transformer secondary length not exceeding - 1.85m (72").

Note: Isolating transformer shall be suitably sized to accommodate specific secondary and other applicable losses.

Environmental Conditions

- ▶ Ambient Temperature -55 °C to +55°C (-67 °F to +131°F)
- ▶ Storage Temperature -55 °C to +55°C (-67 °F to +131°F)
- ▶ Ingress Protection IP66

UK: +44 (0) 1942 68 5555 | USA: 001 (239) 985-9406

www.atgairports.com | products@atgairports.com | sales-usa@atgairports.com

IRIS LED AGL
L-862

IR862C IRIS LED elevated runway edge high intensity lighting solutions



Photometry

Specification

Runway Edge ICAO Fig. A2-9 FAA L-862

Colour	White
Max/Min Intensity ratio	<3.0
Main ellipse average intensity	10000cdfs
Main ellipse minimum intensity	5000cdfs
Second ellipse minimum intensity	1000cdfs
Third ellipse minimum intensity	500cdfs

Typical Measured Values

Colour	White
Max/Min Intensity ratio	2.43
Main ellipse average intensity	10938cdfs
Main ellipse maximum intensity	15482cdfs
Main ellipse minimum intensity	6358cdfs
Second ellipse minimum intensity	3432cdfs
Third ellipse minimum intensity	1793cdfs

Specification

Colour	Yellow
Max/Min Intensity ratio	<3.0
Main ellipse average intensity	5000cdfs
Main ellipse minimum intensity	2000cdfs
Second ellipse minimum intensity	400cdfs
Third ellipse minimum intensity	200cdfs

Typical Measured Values

Colour	Yellow
Max/Min Intensity ratio	2.57
Main ellipse average intensity	5160cdfs
Main ellipse maximum intensity	7068cdfs
Main ellipse minimum intensity	2741cdfs
Second ellipse minimum intensity	1378cdfs
Third ellipse minimum intensity	880cdfs

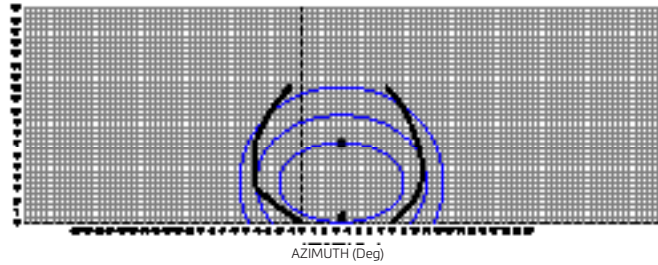
Specification

Colour	Red
Max/Min Intensity ratio	<3.0
Main ellipse average intensity	1500cdfs
Main ellipse minimum intensity	750cdfs
Second ellipse minimum intensity	150cdfs
Third ellipse minimum intensity	75cdfs

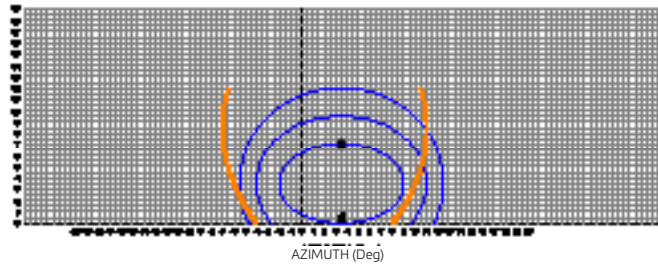
Typical Measured Values

Colour	Red
Max/Min Intensity ratio	2.27
Main ellipse average intensity	2122cdfs
Main ellipse maximum intensity	2918cdfs
Main ellipse minimum intensity	1285cdfs
Second ellipse minimum intensity	764cdfs
Third ellipse minimum intensity	465cdfs

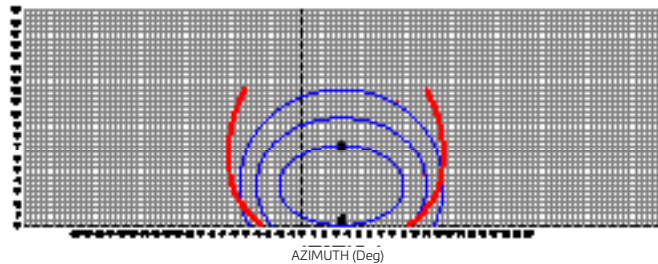
Intensity Chart - IRIS Elevated Runway Edge Luminaire - White



Intensity Chart - IRIS Elevated Runway Edge Luminaire - Yellow



Intensity Chart - IRIS Elevated Runway Edge Luminaire - Red



IR862C

IRIS LED elevated runway edge high intensity lighting solutions



Ordering Codes IR862C



Application
L-862(L) - Runway Edge (45m Wide)

Beam Type
A Side
3 = Toe in right
0 = Blank

B Side
2 = Toe in left
0 = Blank

Colour
A Side
W = White : R = Red
Y = Yellow : O = Blank

B Side
W = White : R = Red
Y = Yellow : O = Blank

Specification
1 = FAA
2 = ICAO

Mounting
0 = No Stem or Coupling
1 = 32mm (1 1/4") Solid Stem with
50.8mm (2") Coupling, 11.5 TPI
H* = 356mm (14")**

**** Option**
00 = No option
XX = Extended 32mm (1 1/4") Stem***

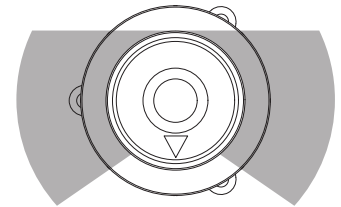
Omni Directional Component
0 = No omni directional optic
1 = Omni directional optic fitted

Fixture Monitoring - Fail Open Feature
0 = No Open Circuit
1 = Open Circuit

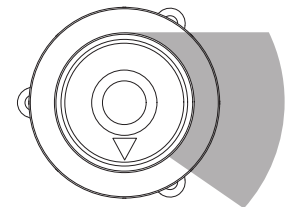
* Overall fitting mounting height when fitted to an L894 mounting plate

Additional optional features are available upon request

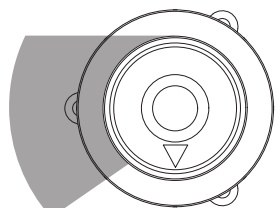
Beam Options



IR862C(L)
Bi-directional
(Low Intensity Omni-directional)



IR862C(L)
Uni-Directional
(Side A)
(Low Intensity Omni-directional)



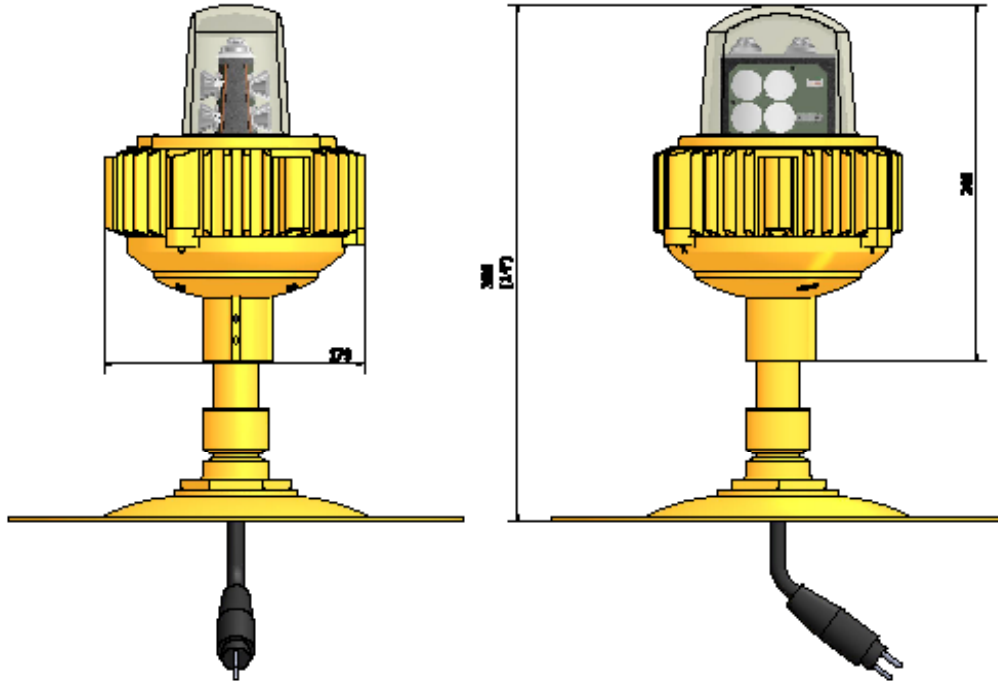
IR862C(L)
Uni-Directional
(Side B)
(Low Intensity Omni-directional)

***Solid Stem Available in 50.8mm (2") increments from 406.4mm (16") to a maximum 762mm (30") for compliance with FAA for applications in snow areas. Enter required overall fitting height Eg. Replace XX with 24 for 24" (609.6mm) *

IR862C

IRIS LED elevated runway edge
high intensity lighting solutions

Dimensions



Packaging

- ▶ Net weight 4.8Kg
- ▶ Gross weight 3.1kg (boxed)
- ▶ Box 220mm (W) x 220mm (D) x 275mm (H)

*Dimensions are nominal

Consultants specification and installation information for the Iris range is available by request.
Contact marketing@atgairports for further details.

The technical data contained herein are intended as reference only. atg airports reserve the right to change technical data and details at any point in time.



atg airports ltd
Lowton Business Park | Newton Road
Lowton St. Mary's | Warrington
WA3 2AP | United Kingdom

atg airports inc
7857 Drew Circle #13
Fort Myers | Florida 33967
USA



📞 UK: +44 (0) 1942 68 5555 | USA: 001 (239) 985-9406

🌐 www.atgairports.com ✉ products@atgairports.com ✉ sales-usa@atgairports.com

IRIS LED AGL
L-862