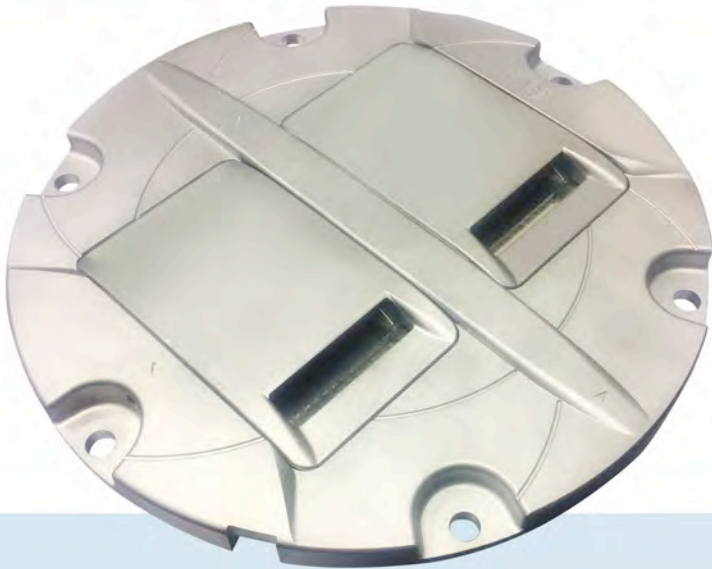
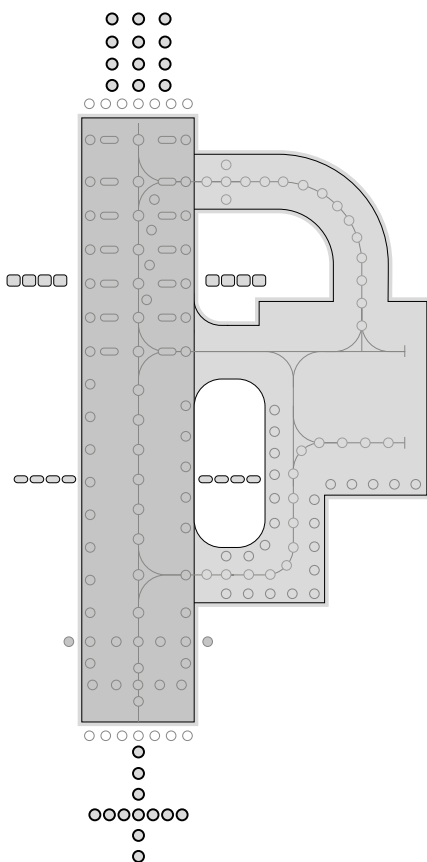


LED technology



IR850AP

IRIS LED 12" runway approach high intensity lighting solutions



Applications

CAT III all weather operation airfield ground lighting (agl) systems.

Compliant with Latest International Standards*

- ▶ ICAO Annex 14. Vol 1
- ▶ FAA AC 150/5345-46†
- ▶ FAA Engineering Brief No. 67†
- ▶ IEC 61827
- ▶ EASA
- ▶ Stannag 3316 (NATO)

* As applicable to the application, compliance with other civil aviation and military regulations confirmed on request

† Electrical/Mechanical/Environmental characteristics only

📞 UK: +44 (0) 1942 68 5555 | USA: 001 (239) 985-9406

🌐 www.atgairports.com ✉ products@atgairports.com ✉ sales-usa@atgairports.com

IRIS LED AGL
IR850AP

IR850AP IRIS LED 12" runway approach high intensity lighting solutions



Electrical Performance

Main Beam Aperture		Colour	Typical Power Consumption - Watts (VA) @ 6.6A				
Horiz(°)	Vert(°)		Per Beam Watts	Fitting* Watts (VA)	PF	Tx Primary** Watts (VA)	PF
-10 to +10	0 to 11	WHT/BLK	111/-	147.8 (148.4)	0.99	193.6 (194.9)	0.99

Fixture Operational Current Range: 2.7 to 6.7A RMS

* as measured at the input leads of the fixture.

** as measured across the primary winding of an appropriately sized isolation transformer with a total fixture and transformer secondary length not exceeding ~ 1.85m (72").

Note: Isolating transformer shall be suitably sized to accommodate specific secondary and other applicable losses.

Environmental Conditions

- ▶ Ambient Temperature -55 °C to +55°C (-67 °F to +131°F)
- ▶ Storage Temperature -55 °C to +55°C (-67 °F to +131°F)
- ▶ Ingress Protection IP67

Photometry

Specification

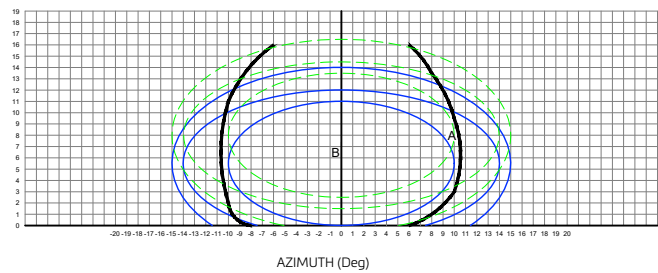
Runway Approach ICAO Fig. A2-1

Colour	White
Max/Min Intensity ratio	<3.0
Main ellipse average intensity	20000cds
Main ellipse minimum intensity	10000cds
Second ellipse minimum intensity	2000cds
Third ellipse minimum intensity	1000cds

Typical Measured Values

Colour	White
Max/Min Intensity ratio	4.4
Main ellipse average intensity	20827cds
Main ellipse maximum intensity	34041cds
Main ellipse minimum intensity	7632cds
Second ellipse minimum intensity	3261cds
Third ellipse minimum intensity	1632cds

Intensity Chart - IRIS Runway Approach Luminaire - White



UK: +44 (0) 1942 68 5555 | USA: 001 (239) 985-9406

www.atgairports.com | products@atgairports.com | sales-usa@atgairports.com

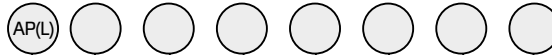
IRIS LED AGL
IR850AP

IR850AP

IRIS LED 12" runway approach
high intensity lighting solutions



Ordering Codes IR850



Application
IR850AP(L) - Runway Approach

Beam Type
A Side
 1 = Straight/Axial
 0 = Blank

B Side
 1 = Straight/Axial
 0 = Blank

Colour
A Side
 W = White
 0 = Blank

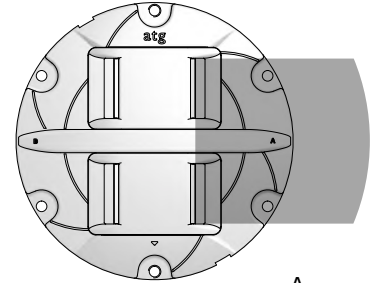
B Side
 W = White
 0 = Blank

Specification
2 = ICAO

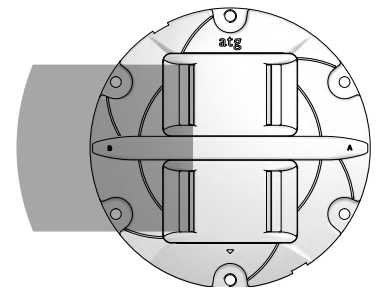
Connections
1 = 1 Bi Pin Plug

Fixture Monitoring - Fail Open Feature
 0 = No Open Circuit
 1 = Open Circuit

Beam Options



IR850AP(L)
Uni-Directional (Side A)

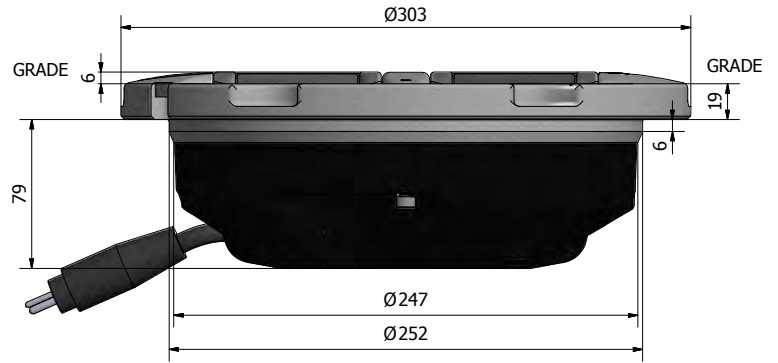
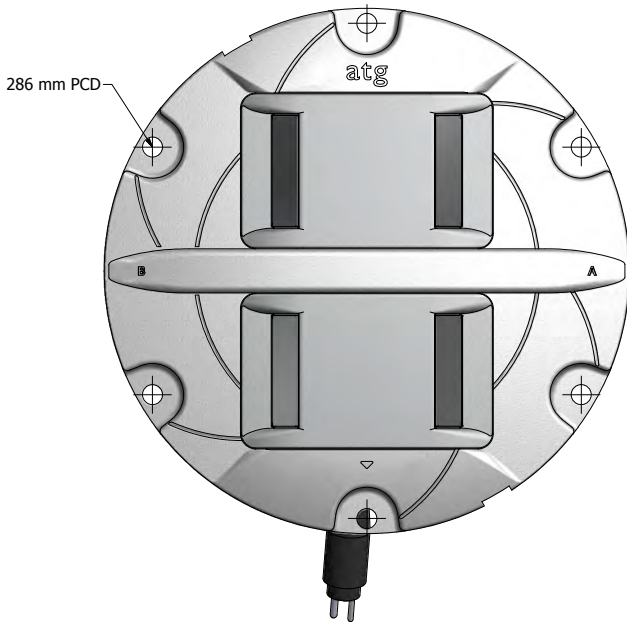


IR850AP(L)
Uni-Directional (Side B)

Additional optional features are available upon request

IR850AP IRIS LED 12" runway approach high intensity lighting solutions

Dimensions



Packaging

- ▶ Net weight 9.3Kg
- ▶ Gross weight 7.6kg (boxed)
- ▶ Box 50mm (W) x 330mm (D) x 330mm (H)

*Dimensions are nominal

Consultants specification and installation information for the Iris range is available by request. Contact marketing@atgairports for further details.

atg airports reserve the right to change technical data and details at any point in time.



atg airports ltd
Lowton Business Park | Newton Road
Lowton St. Mary's | Warrington
WA3 2AP | United Kingdom

atg airports inc
7857 Drew Circle #13
Fort Myers | Florida 33967
USA



UK: +44 (0) 1942 68 5555 | USA: 001 (239) 985-9406

www.atgairports.com | products@atgairports.com | sales-usa@atgairports.com

IRIS LED AGL
IR850AP