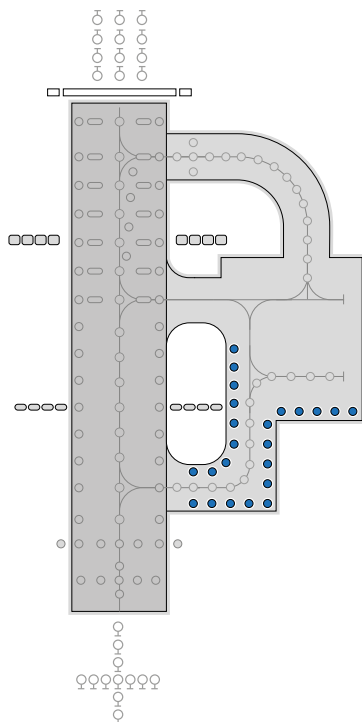


LED technology



IR852T

IRIS LED 8" taxiway and apron edge, omnidirectional, high intensity lighting solutions



Applications

CAT I/II/III all weather operation airfield ground lighting (agl) systems.

Compliant with Latest International Standards*

- ▶ ICAO Annex 14. Vol 1
- ▶ FAA AC 150/5345-46
- ▶ FAA Engineering Brief No. 67
- ▶ IEC 61827
- ▶ EASA
- ▶ Stannag 3316 (NATO)

* As applicable to the application, compliance with other civil aviation and military regulations confirmed on request

📞 UK: +44 (0) 1942 68 5555 | USA: 001 (239) 985-9406

🌐 www.atgairports.com ✉ products@atgairports.com ✉ sales-usa@atgairports.com

IRIS LED AGL
IR852T

IR852T IRIS LED 8" taxiway and apron edge, omni directional, high intensity lighting solutions



Electrical Performance

Main Beam Aperture		Colour	Typical Power Consumption - Watts (VA) @ 6.6A					
Horiz(°)	Vert(°)		Per Beam Watts	Fitting* Watts (VA)	PF	Tx Primary** Watts (VA)	PF	Isolating Transformer
0-359	0-6	Blue	0.75	4.71(4.74)	0.993	12.87(13.01)	0.991	10W
0-359	0-6	Blue	0.75	4.67(4.70)	0.993	13.76(14.09)	0.977	25W
0-359	0-6	Blue	0.75	4.64(4.66)	0.994	16.23(17.16)	0.948	45W

Fixture Operational Current Range: 2.7 to 6.7A RMS

Notes: Isolating transformer shall be suitably sized to accommodate specific secondary and other applicable losses.

* as measured at the input leads of the fixture.

** as measured across the primary winding of an appropriately sized isolation transformer with a total fixture and transformer secondary length not exceeding - 1.85m (72"). CCR shall be suitably sized for the indicated transformer VA for the relevant isolating transformer utilised.

*** main beam vertical requirements for FAA is 1° to 6° for IR852T

Environmental Conditions

- ▶ Ambient Temperature -55 °C to +55°C (-67 °F to +131°F)
- ▶ Storage Temperature -55°C to +55°C (-67 °F to +131°F)

▶ Ingress Protection IP67

Photometry

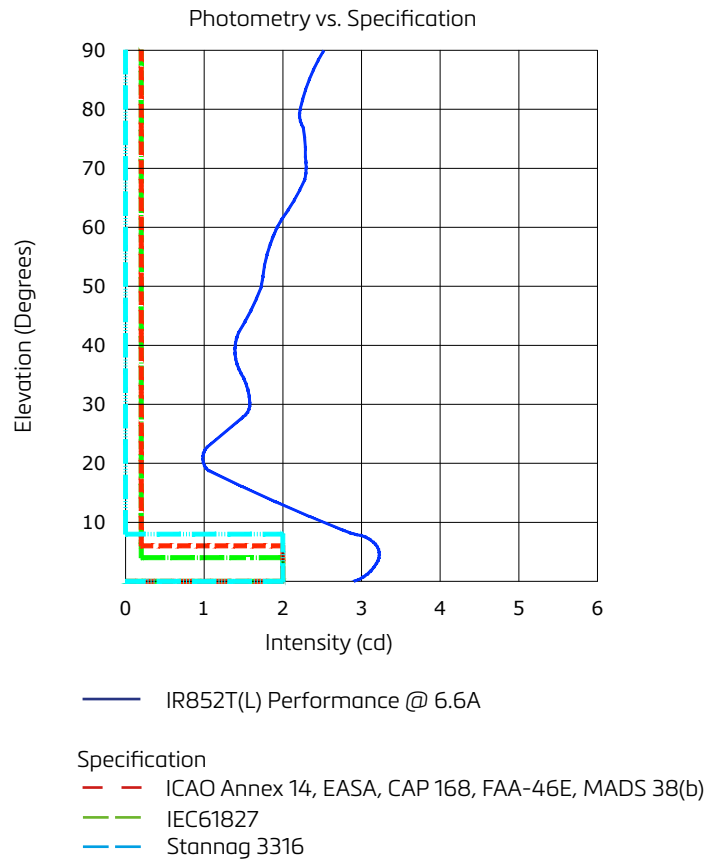
Specification

Taxiway & Apron Edge omni-directional ICAO - 5.3.18.7/8 FAA L-852T

Colour	Blue
Main rect. minimum intensity 0°-6°	2 cd
Second rect. minimum intensity 6°-90°	0.2 cd

Typical Measured Values

Colour	Blue
Main rect. minimum intensity 0°-6°	3.0 cd
Main rect. minimum intensity 0°-8° (Stannag)	2.9 cd
Second rect. minimum intensity 6°-90°	1.0 cd



UK: +44 (0) 1942 68 5555 | USA: 001 (239) 985-9406

www.atgairports.com | products@atgairports.com | sales-usa@atgairports.com

IRIS LED AGL
IR852T

IR852T IRIS LED 8" taxiway and apron edge, omni directional, high intensity lighting solutions



Ordering Codes IR852

(L) ○ ○ ○ ○ ○ ○

Application
L-852T(L) Taxiway & Apron Edge
omni-directional

Beam Type
7 = Omni directional (360°)

Colour
B = Blue

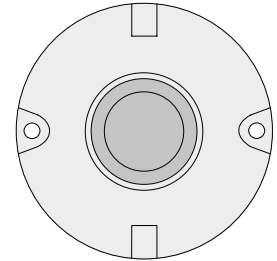
Optional Shield
1 = 180° Shield
0 = No Shield

Specification
1 = FAA
2 = ICAO

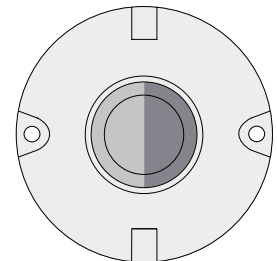
Fixture Monitoring - Fail Open Feature
0 = No Open Circuit
1 = Open Circuit

* Other seating/mounting configurations are available on request.

Beam Options



IR852T(L)
Omni Directional 360°



IR852T(L)
Omni Directional
with 180° Shield

UK: +44 (0) 1942 68 5555 | USA: 001 (239) 985-9406

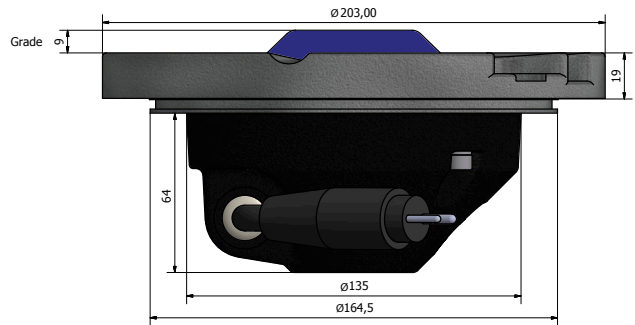
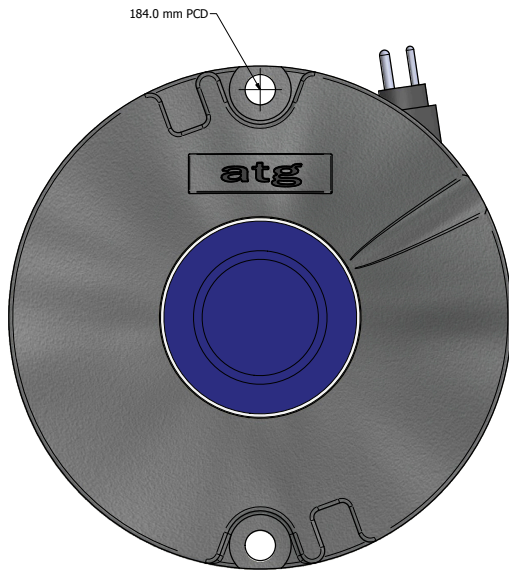
www.atgairports.com | products@atgairports.com | sales-usa@atgairports.com

IRIS LED AGL
IR852T

IR852T IRIS LED 8" taxiway and apron edge, omni directional, high intensity lighting solutions



Dimensions



Packaging

► Net weight 3kg ► Gross weight 3.5kg ► Box 230mm(w) x 230mm(d) x 146mm(h)

*Dimensions are nominal

Consultants specification and installation information for the Iris range is available by request. Contact marketing@atgairports for further details.

atg airports reserve the right to change technical data and details at any point in time. Errors may have occurred



atg airports ltd
Lowton Business Park | Newton Road
Lowton St. Mary's | Warrington
WA3 2AP | United Kingdom

atg airports inc
7857 Drew Circle #13
Fort Myers | Florida 33967
USA



UK: +44 (0) 1942 68 5555 | USA: 001 (239) 985-9406

www.atgairports.com | products@atgairports.com | sales-usa@atgairports.com

IRIS LED AGL
IR852T