

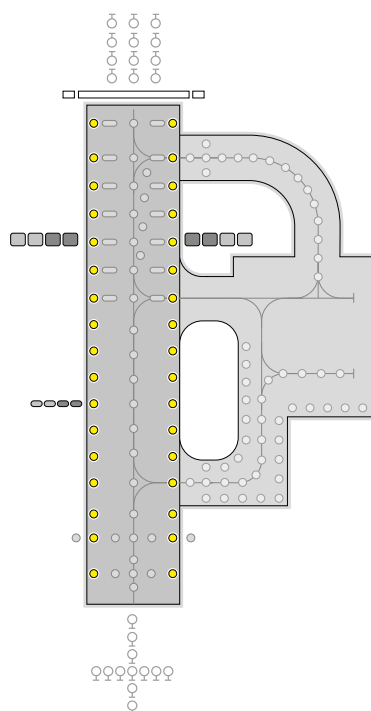
Tungsten halogen technology



ZA163

Runway edge light

High intensity, bi-directional
(with omni-directional
component) elevated light



Features

- Choice of three mounting stems available:
 - M32 threaded frangible spigot
 - 25mm I/D socket with side cable entry
 - 25mm O/D spigot suitable for an FAA type frangible coupling
- Lamp change possible without tools using the 'twist lock' facility
- Outer glass dome moulded in low expansion glass to resist thermal shock
- Smooth outer glass surface resists build up of dirt and provides for easier cleaning
- All sub-assemblies are keyed to simplify routine maintenance and ensure correct alignment
- Robust corrosion resistant aluminium construction for strength and durability
- Gimble mounting for ease of alignment and levelling
- Screws are stainless steel
- Silicon rubber gaskets seal the dome against ingress of liquids
- Powder coat paint finish in golden yellow. All fasteners are stainless steel
- IMM available on request

Compliance with standards

- ICAO Annex 14, fig A2-9 and A2-10
- CAA CAP168, fig 6A/9, 6A/10 & Table 6A/1
- NATO STANAG 3316
- BS3224 Part 4, elevated fittings
- FAA AC 150/5345-46D L860, L861, L862

Application

High intensity, bi-directional (with omni-directional component), elevated runway edge light for use in all weather operation installations up to ICAO category III systems.

Medium intensity, bi/uni-directional elevated threshold/end light.

Options

- ZS022 sighting device with adapter
- J1/76 Pk30d 45W
- J1/80 Pk30d 100W
- J1/83 Pk30d 150W
- J1/84 Pk30d 200W
- 180° coloured glass filters:
 - Red
 - Yellow
 - Green
 - Blue
- 180° blanking screen
- Daylight marker cone kit

Electrical supply

Suitable for use in 6.6A airfield lighting circuits, normally supplied from either a 45W, 100W, 150W or 200W series circuit isolating transformer. Power consumption varies depending upon type of lamp fitted.

Packaging data

Net weight	1.8kg
Gross weight	2.0kg
Carton size	210mm(w) x 210mm(d) x 160mm(h)

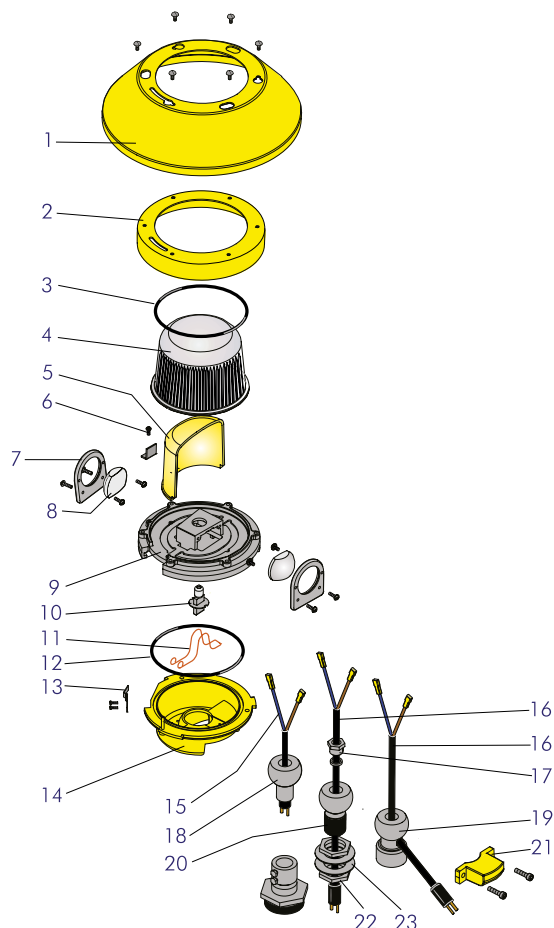
UK: +44 (0) 1942 68 5555 | USA: 001 (239) 985-9406

www.atgairports.com products@atgairports.com sales-usa@atgairports.com

ZA163

Components

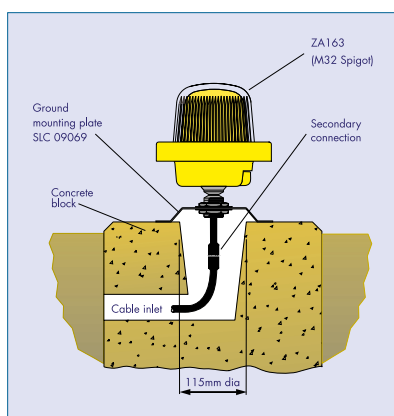
1	Marker cone (1-off)	29215
2	Rim (1-off)	SLC29214
3	Glass dome "O" ring (1-off)	SLC33091
4	Glass dome (1-off)	SLC16056
5	Filter glass various colours	
	180° coloured glass filters:	
	Red	
	Yellow	
	Green	
	Blue	
	180° blanking screen	
6	Filter clip (4 off)	29219
7	Lens holder (2-off)	29210
8	Lens (2-off)	27923
9	Top casting (1-off)	29211
10	J1/80 Pk30d 100W or J1/83 Pk30d 150W or J1/84 Pk30d 200W	SLC08057 SLC08088 SLC08089
11	Lamp retaining spring (1-off)	29216
12	Base casting "O" ring (1-off)	SLC33091
13	Lock spring (1-off)	29217
14	Base casting (1-off)	Not Saleable
15	Short lead for 1" O/D stem	
16	B type lead for 1" I/D and M32 stem	SLC13001
17	M20 elkey gland set and seal (1-off)	
18	1" O/D stem	29223
19	1" I/D stem	29222
20	M32 stem	29221
21	Clamp (1-off)	29213
22	M32 hexagonal nut (2-off)	
23	32 dia washer (2-off)	



Typical installation methods

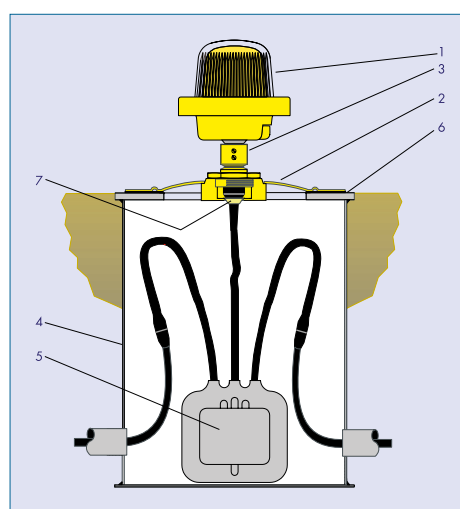
- On a 204mm (8") dia. ground mounting plate
- On a FAA L867 type base can
- On a ground mounting spike
- On a FAA type frangible coupling
- Other installation methods available on request

ZA163 installed on 24mm (8") ground mounting plate



Note The ground mounting plate is designed to be held down by means of three 10mm (3/8") rag bolts grouted into the concrete block on 178mm PCD

ZA163 installed on a FAA L867 base can



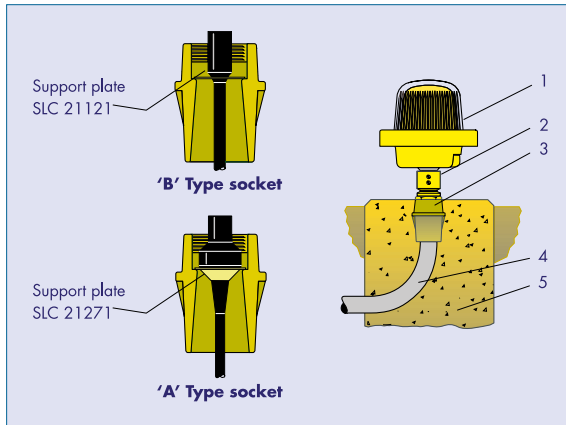
1. ZA163 25mm O/D Spigot
2. FAA Type L867 Baseplate
3. Frangible Coupling
4. FAA Type L867 Base
5. Isolating transformer
6. Gasket
7. Support Plate

UK: +44 (0) 1942 68 5555 | USA: 001 (239) 985-9406

www.atgairports.com | products@atgairports.com | sales-usa@atgairports.com

ZA163

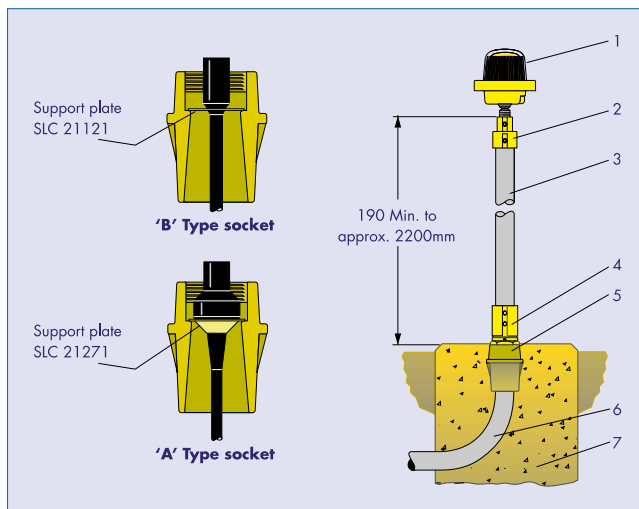
ZA163 installed on a FAA Type frangible coupling



Alternative support arrangements for 'A' or 'B' type socket leads mounted in a wells coupling

- | | |
|--------------------------|--------------------------------------|
| 1. ZA163 25mm O/D Spigot | 4. 50mm dia. pipe (plastic or metal) |
| 2. Frangible coupling | 5. Concrete block |
| 3. Wells coupling | |

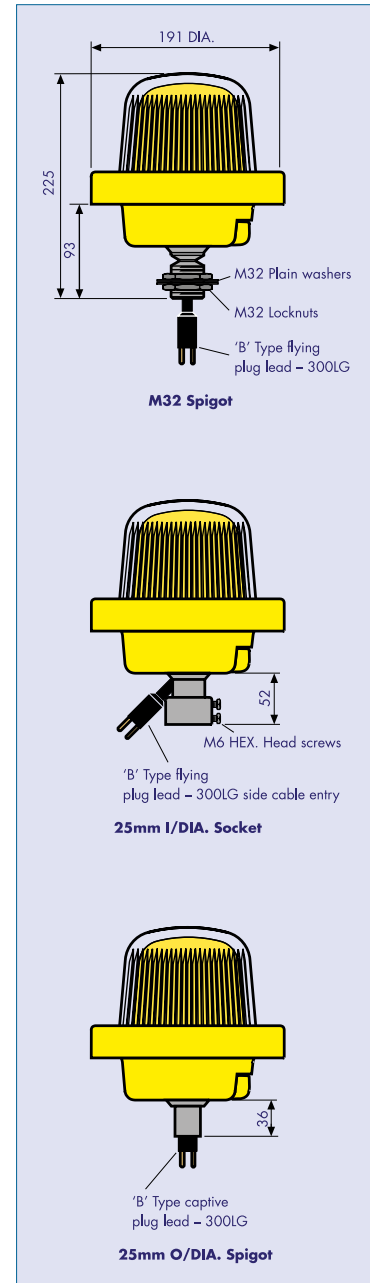
ZA163 installed on a short approach pole up to 2.2m long



Alternative support arrangements for 'A' or 'B' type socket leads mounted in a wells coupling

- | | |
|-----------------------------|--------------------------------------|
| 1. ZA163 M32 Spigot | 5. Wells Coupling |
| 2. Top Coupling | 6. 50mm dia. pipe (plastic or metal) |
| 3. Aluminum Tube 50.8mm dia | 7. Concrete block |
| 4. Frangible coupling | |

ZA163 general arrangement

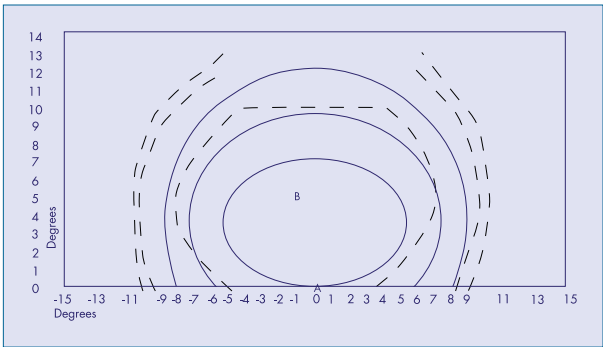


Photometric performance

Runway Edge

White	ZA163
Main Ellipse Intensity Measurements (Candelas)	
Average	12639
Min. Average	10000
Max (B)	17250
Min (A)	6927

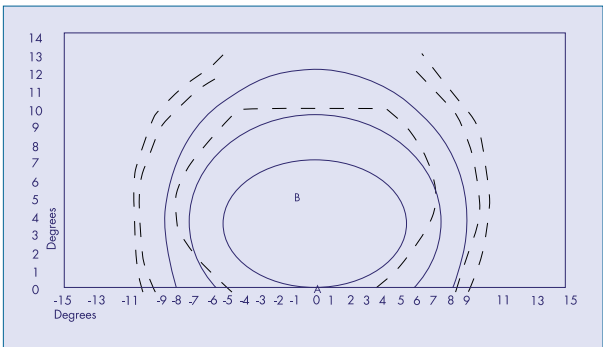
Nominal Lamp Details	
Power	150 Watts
Current	6.6 Amps
Type	J1/B3
CAP168	6A.9
ICAO	2-9



Runway Edge

White	ZA163
Main Ellipse Intensity Measurements (Candelas)	
Average	10916
Min. Average	10000
Max (B)	15058
Min (A)	5785

Nominal Lamp Details	
Power	200 Watts
Current	6.6 Amps
Type	J1/B4
CAP168	6A.10
ICAO	2-10



Other photometric information available on request.

Ordering code

ITEM	STEM TYPE			FINISH
	M32 FRANGIBLE SPIGOT	25mm O/D Spigot	25mm I/D Spigot	Y (Golden Yellow)
ZA163		1		Y



atg airports ltd
Lowton Business Park | Newton Road
Lowton St. Mary's | Warrington
WA3 2AP | United Kingdom

atg airports inc
7857 Drew Circle #11
Fort Myers | Florida 33967
USA

UK: +44 (0) 1942 68 5555 | USA: 001 (239) 985-9406

www.atgairports.com products@atgairports.com sales-usa@atgairports.com

ZA163