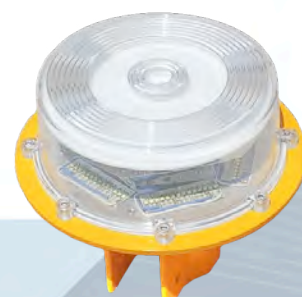


Heliport & Helipad Lighting

Heliport Beacon

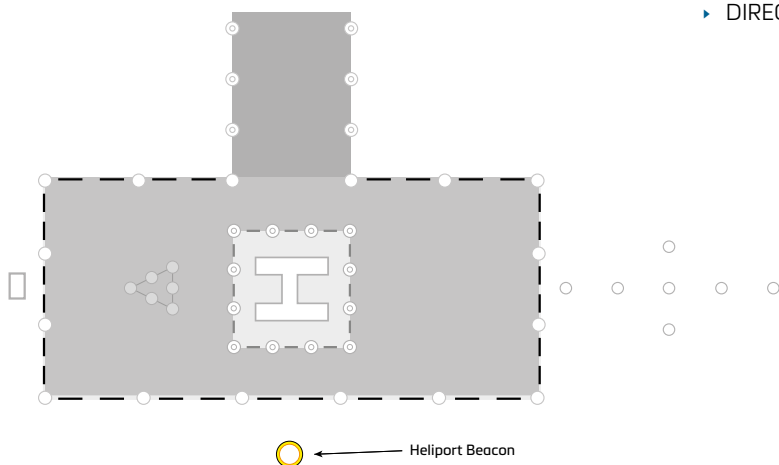


Application

- ▶ A heliport beacon should be provided at a heliport where:
 - a) long-range visual guidance is considered necessary and is not provided by other visual means; or
 - b) identification of the heliport is difficult due to surrounding lights
- ▶ The heliport beacon shall be located on or adjacent to the heliport preferably at an elevated position and so that it does not dazzle a pilot at short range.
- ▶ The heliport beacon emit repeated series of equispaced short duration white flashes.
- ▶ The light from the beacon is shown at all angles of azimuth.

Compliant with latest International standards

- ▶ ICAO Aerodromes, Annex 14 Aerodrome Design and Operations
- ▶ DIRECTIVE 2002/95/EC:2003 Restriction of the use of certain hazardous substances in electrical and electronic equipment (RoHS)



UK: +44 (0) 1942 68 5555 | USA: 001 (239) 985-9406

www.atgairports.com | products@atgairports.com | sales-usa@atgairports.com

Heliport Lighting
Beacon

Heliport Series | Heliport Beacon



Light source characteristics

- ▶ Light intensity: min 2500cd
- ▶ Light flashing rate: letter H in morse code according ICAO
- ▶ High power OSRAM LEDs
- ▶ Specially designed reflector
- ▶ Period of use of LEDs is minimum 50000 hours
- ▶ Light color: White - according to CIE Chromaticity Boundary

Technical characteristics

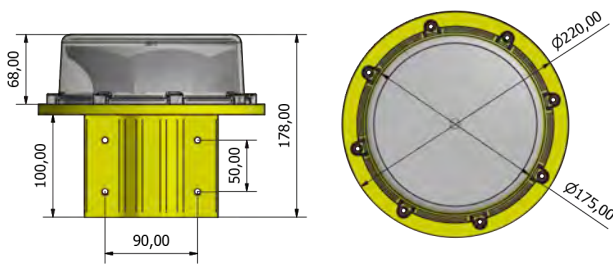
- ▶ The casing is made out of aluminum powder coated in electrostatic field
- ▶ The disperser is made of transparent polycarbonate, UV protected
- ▶ The degree of protection IP66
- ▶ The fitting is bolted on any flat surface with a frangible coupling
- ▶ Nominal operating temperature from -40 to +50 °C

Technical Data	
Body material	Powder coated aluminium
Body colour	Yellow aviation (RAL 1004)
Peak power	116W
Power supply	Standard: 230V AC
Driver	Included
Disperser	Transparent polycarbonate
LEDs power	1.3Wh

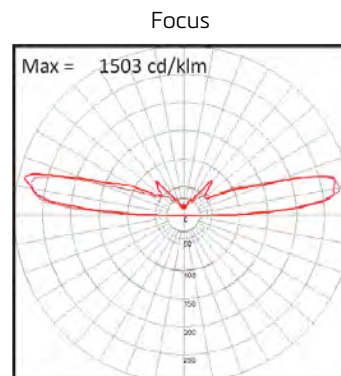
Electrical characteristics

- ▶ Standard power supply is 230 V, 50/60 Hz
- ▶ Peak power: 116W
- ▶ Average consumption: 1.3Wh
- ▶ Power cable length 2 m
- ▶ Electrical insulation resistance: I

Dimensions



Photometrics



atg airports ltd
 Lowton Business Park | Newton Road
 Lowton St. Mary's | Warrington
 WA3 2AP | United Kingdom

atg airports inc
 7857 Drew Circle #11
 Fort Myers | Florida 33967
 USA



UK: +44 (0) 1942 68 5555 | USA: 001 (239) 985-9406

www.atgairports.com | products@atgairports.com | sales-usa@atgairports.com

Heliport Lighting
Beacon